

# **Environmental, Fire, and Health & Safety Concerns Related to Cannabis Cultivation**

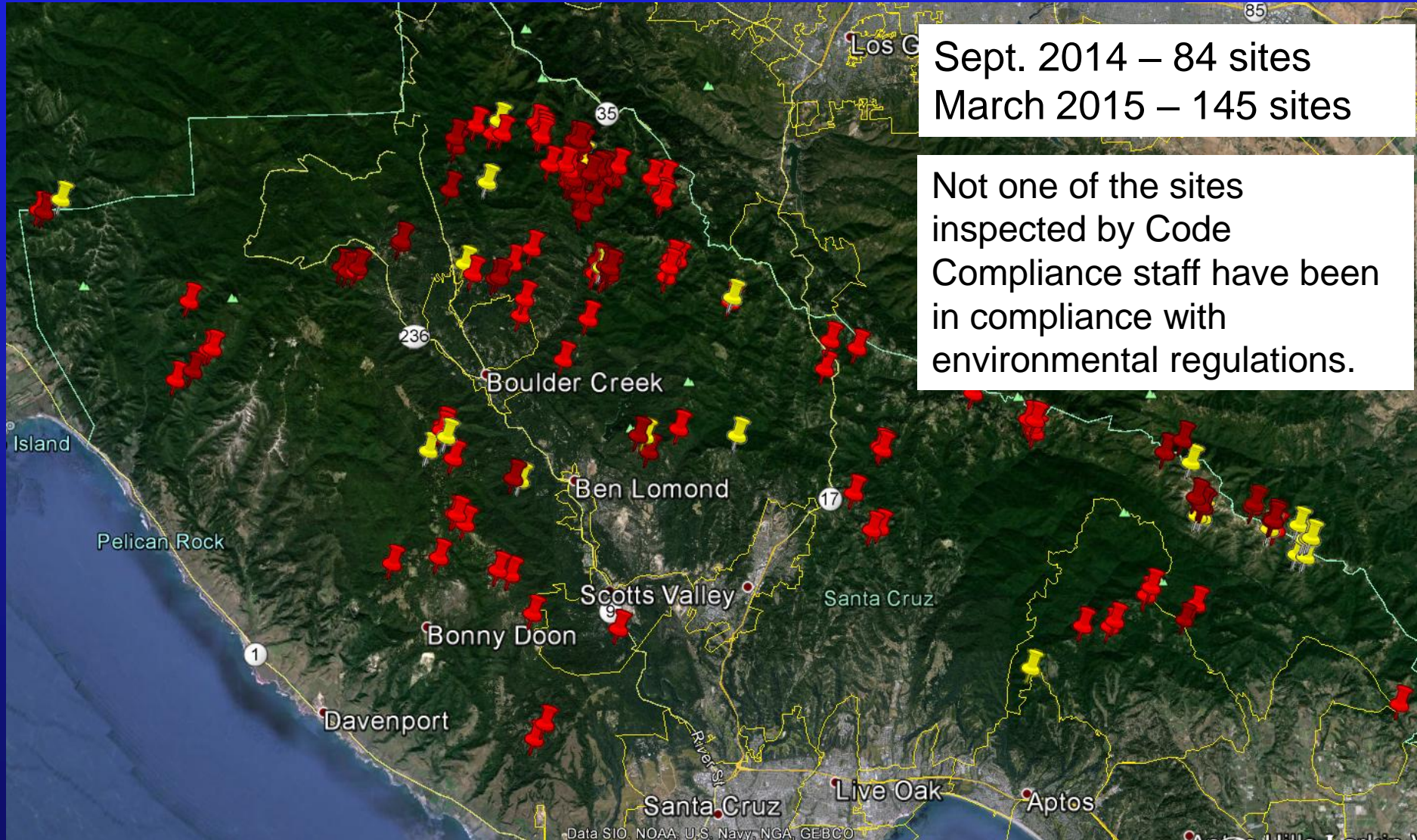


# Example of Cultivation Locations

(Yellow: Active Cases, Red: Potential Violation)

Sept. 2014 – 84 sites  
March 2015 – 145 sites

Not one of the sites inspected by Code Compliance staff have been in compliance with environmental regulations.



# Cultivation

Discussion on Rollitup.org

Re: Where is the best place in California to grow marijuana?

“...suggest looking in Boulder Creek, Felton, Correlitos, etc....That’s kinda the optimal place to grow there anyways. No one gives a \*\*\*\* what you do out there.”

Per local Farmer’s Insurance Agent:

1 of 6 homeowners’ insurance claims in California are related to problems with illegal indoor grows.

# Environmental Issues



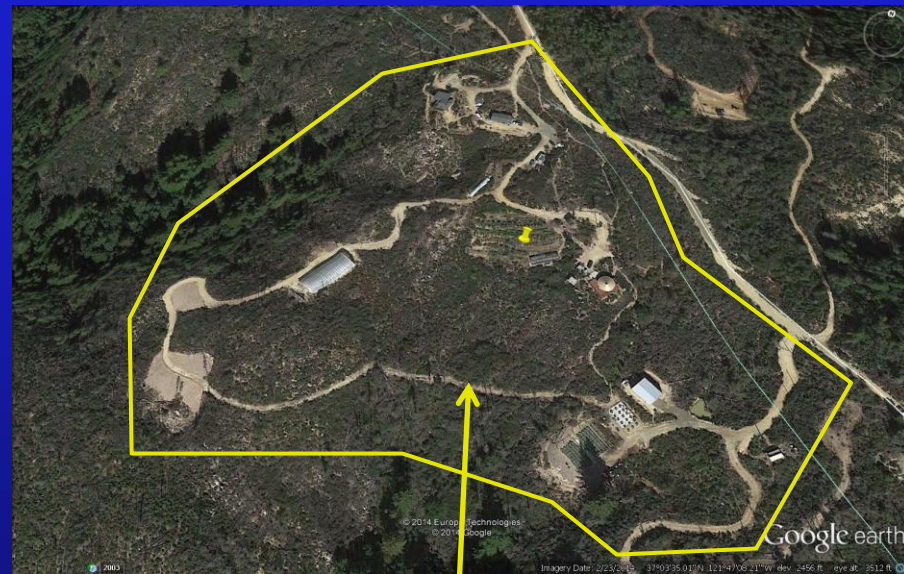
Grading, Erosion and Tree Removal

# Environmental Issues

Large scale unpermitted clearing and grading in watersheds of coho and steelhead habitat



Before



After

# Environmental Issues



BEFORE



AFTER

# Environmental Issues



BEFORE



AFTER

# Environmental Issues



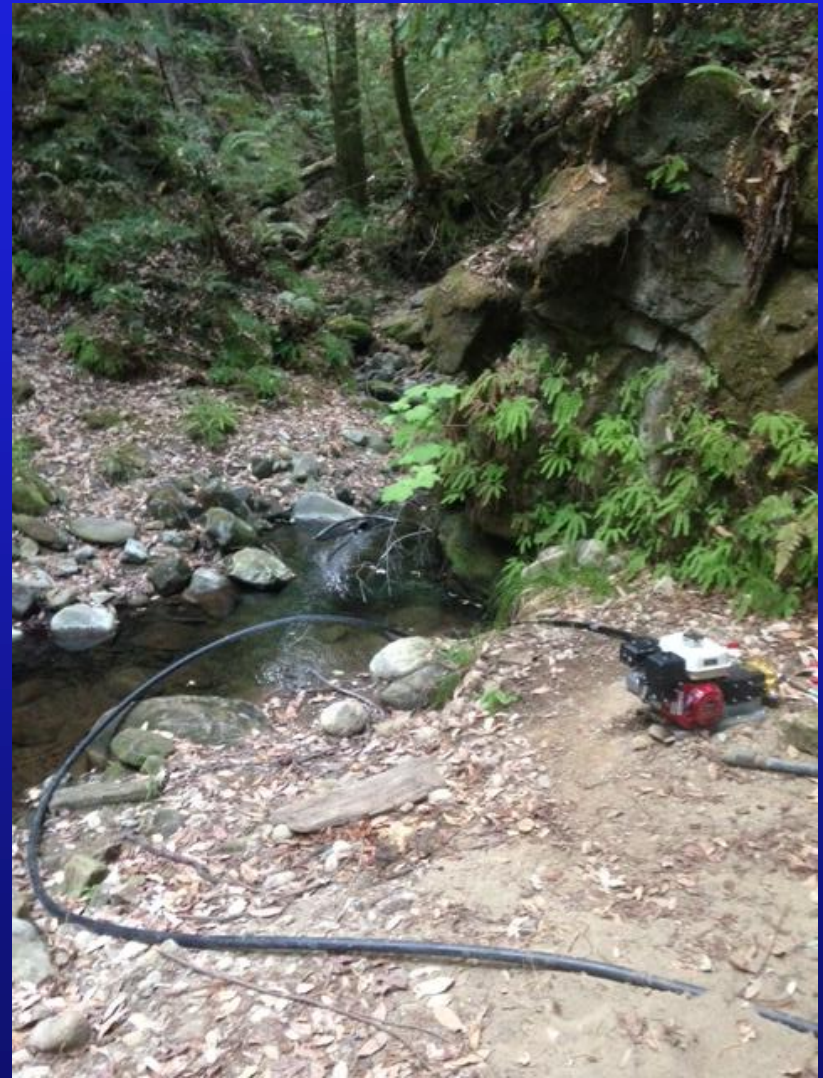
BEFORE



AFTER



# Environmental Issues



Damming streams

Pumping of Water out of streams

# Fire Issues

- Access roads don't meet requirements for emergency vehicles
- Unpermitted electrical
- Gas powered generators
- Outdoor burn piles, campfires
- Unpermitted or inspected propane systems



# Fire Issues



# Health and Safety Issues

- Garbage
- No septic or sewer
- People living in containers, camper, tents or other unsafe structures
- Fertilizers and Pesticides



# Effects on Work of Resource Agencies

- **Resource Conservation District**
  - Sediment reduction projects
  - Habitat restoration
- **NOAA Fisheries**
  - Coho recovery plans
- **US Fish and Wildlife**
  - Habitat restoration
  - Protection of endangered and threatened species
- **California Department of Fish and Wildlife**
  - Protection of endangered species
- **Environmental Health Services – Water Resources**
  - Watershed / stream habitat protection and restoration
  - Water supply
- **Calfire**
  - Protection of timber resources
- **Environmental Planning**
  - Erosion and sediment control / protection of riparian areas
  - Safety of graded areas