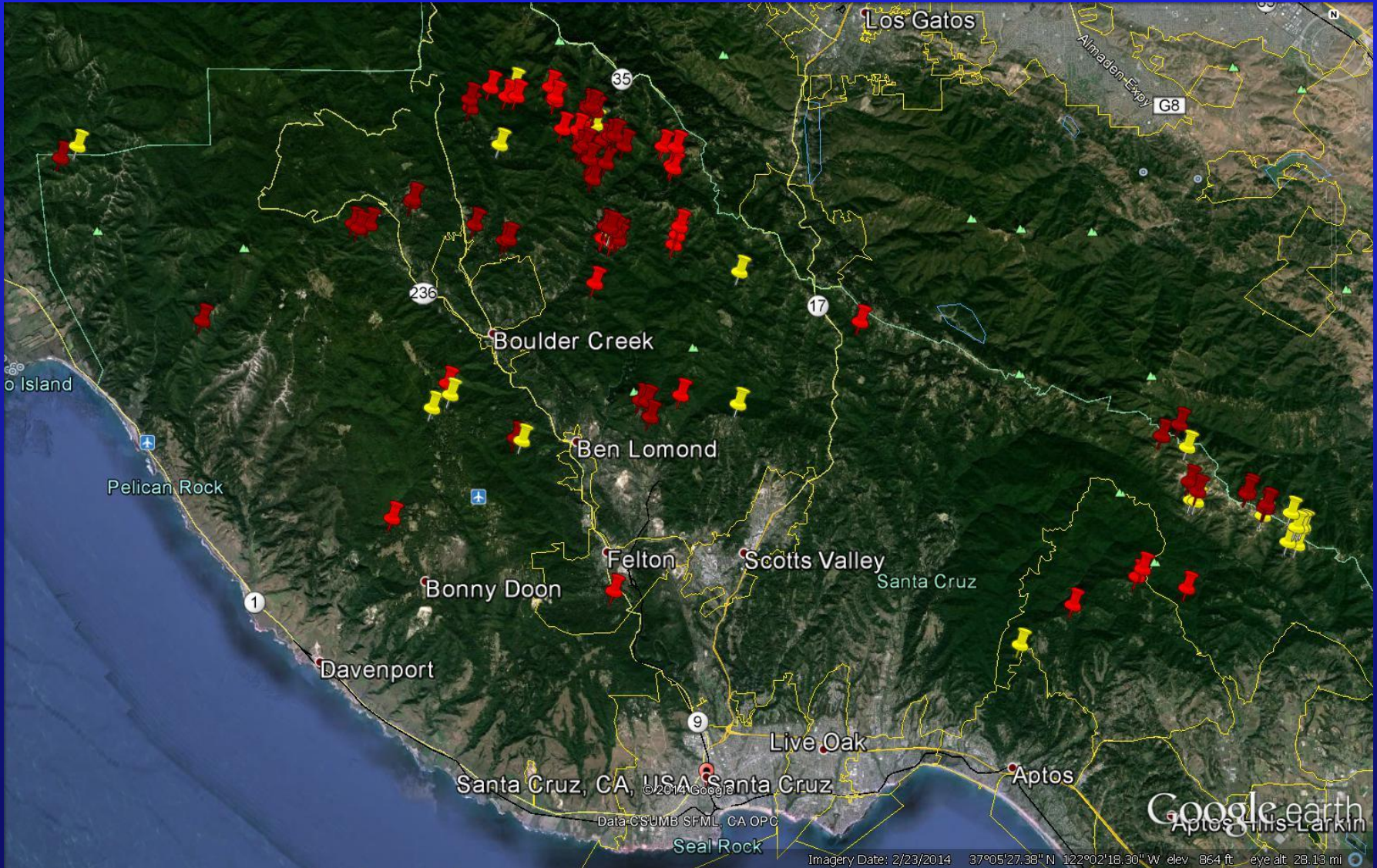


Environmental, Fire, and Health & Safety Concerns Related to Cannabis Cultivation



Example of Cultivation Locations

(Yellow: Active Cases, Red: Potential Violation)



Environmental Issues



Grading, Erosion and Tree Removal

Environmental Issues

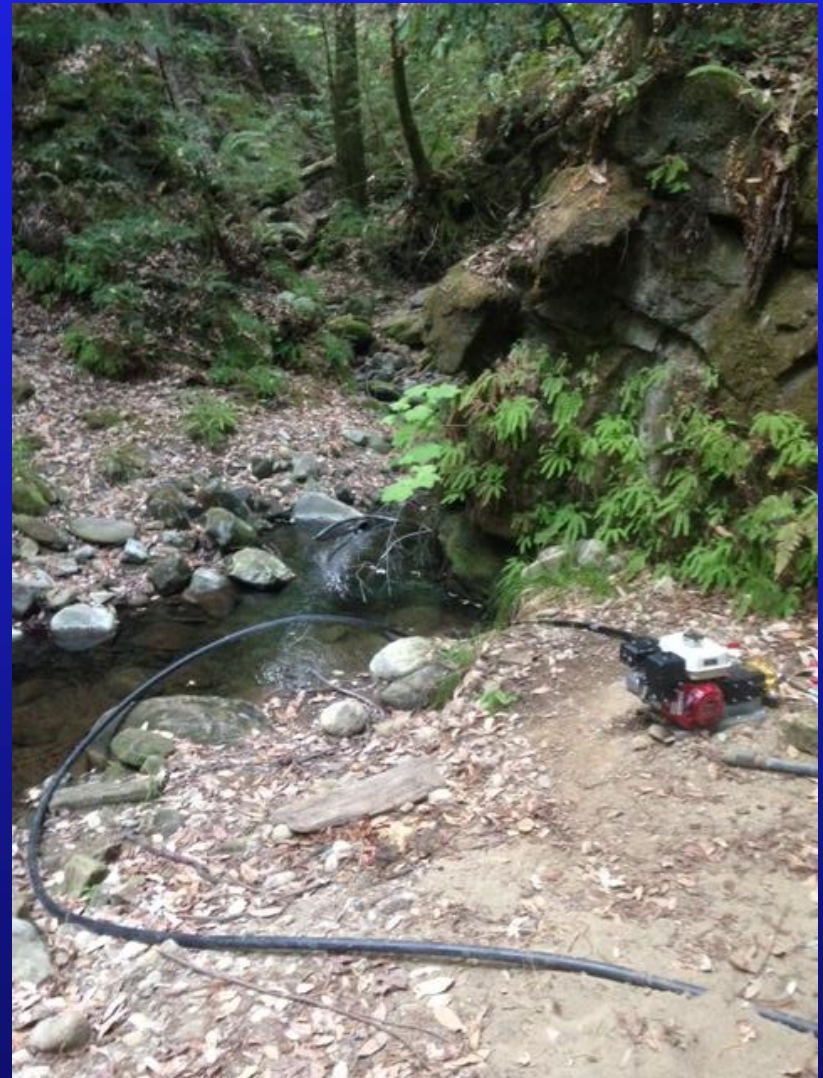


Before



After

Environmental Issues



↑
Damming streams

→
Pumping of Water out of streams

Environmental Issues



Clearing in Sensitive Habitat

Fire Issues

- Access roads don't meet requirements for emergency vehicles
- Unpermitted electrical
- Gas powered generators
- Outdoor burn piles, campfires
- Unpermitted or inspected propane systems



Fire Issues

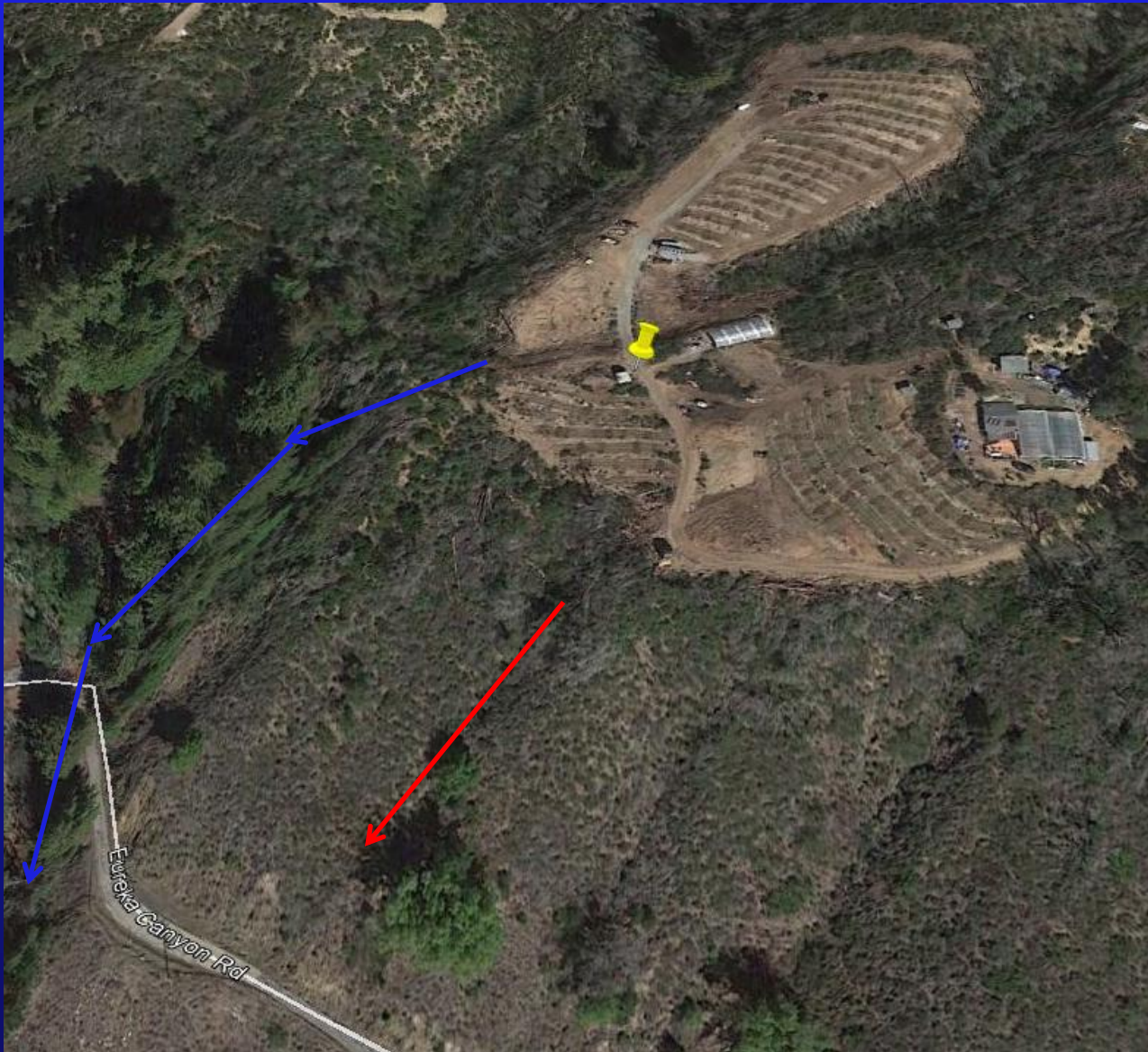


Health and Safety Issues

- Garbage
- No septic or sewer
- People living in containers, camper, tents or other unsafe structures
- Fertilizers and Pesticides



Example Violation



- ~3 acres cleared
- Riparian area cleared
- Drains to Corralitos Creek (steelhead stream)
- >1,000 cubic yards of grading
- High potential to close Eureka Canyon Rd.

Site Photos

- 11 structures
- Outhouse
- Various electrical issues
- Propane tanks
- Wood burning stoves

