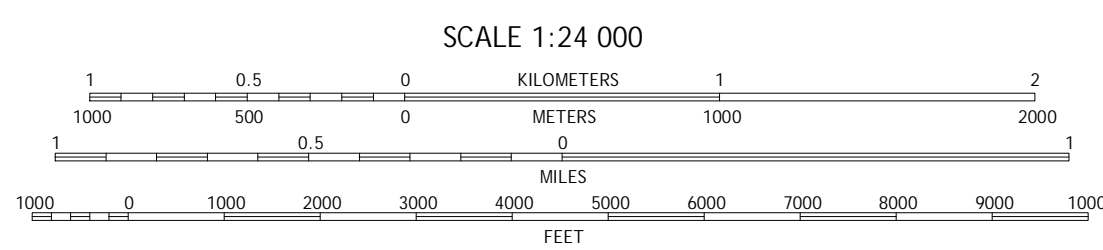
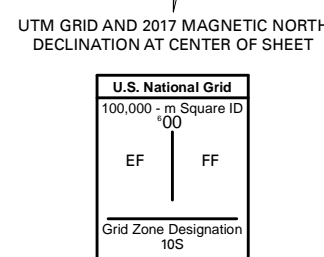
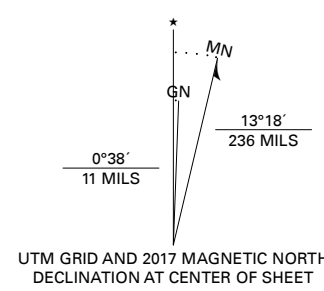


Produced by the United States Geological Survey
North American Datum of 1983 (NAD83)
World Geodetic System of 1984 (WGS84) Projection and
1 000-meter grid: Universal Transverse Mercator, Zone 10S
This map is not a legal document. Boundaries may be
generalized for this map scale. Private lands within government
reservations may not be shown. Obtain permission before
entering private lands.

Imagery.....NAIP, June 2016 - October 2016
Roads.....U.S. Census Bureau, 2016
Names.....GNIS, 1981 - 2018
Hydrography.....National Hydrography Dataset, 2005
Contours.....National Elevation Dataset, 1999
Boundaries.....Multiple sources - see metadata file, 2016 - 2017
Public Land Survey System.....BLM, 2018
Wetlands.....FWS National Wetlands Inventory 1981 - 1993



SCALE 1:24 000
CONTOUR INTERVAL 20 FEET
NORTH AMERICAN VERTICAL DATUM OF 1988

This map was produced to conform with the
National Geospatial Program US Topo Product Standard, 2011.
A metadata file associated with this product is draft version 0.6.18



QUADRANGLE LOCATION

1	2	3
4	5	6

- 1 Felton
- 2 Laurel
- 3 Loma Prieta
- 4 Santa Cruz
- 5 Watsonville West
- 6 Moss Landing

ROAD CLASSIFICATION	
	Expressway
	Secondary Hwy
	Ramp
	Interstate Route
	Local Connector
	Local Road
	4WD
	US Route
	State Route




Project Site



May 31, 2022

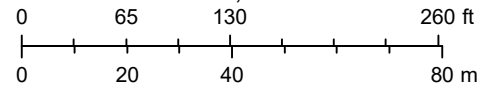
Parcels

 Parcels

Street Labels

 Street Labels

1:1,440



County of Santa Cruz



2840 Park Ave

Park Ave

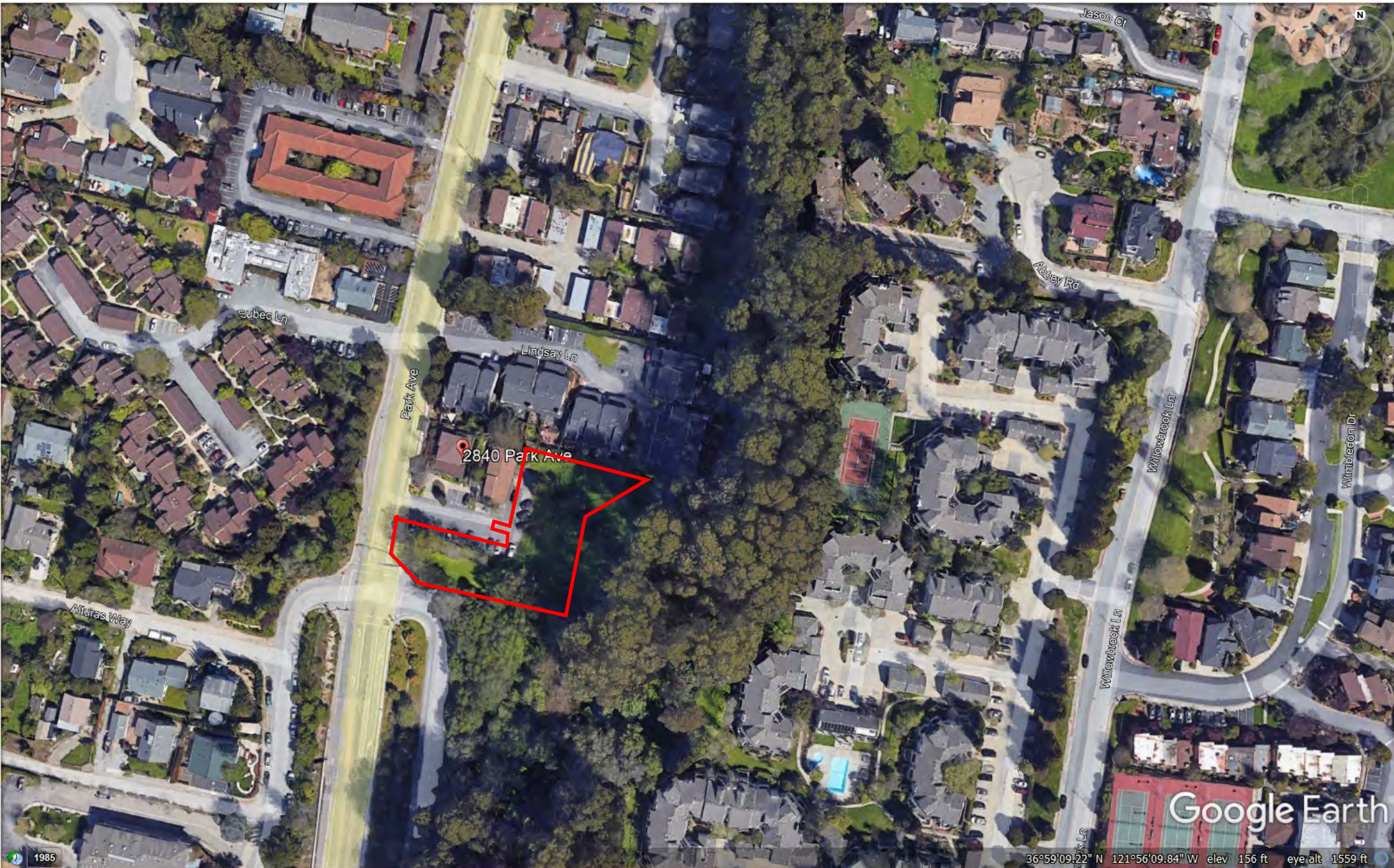
te Dr

1985

Google Earth

36°59'09.97" N 121°56'08.60" W elev 113 ft eye alt 571 ft





2840 Park Ave

Google Earth

36°59'09.22" N 121°56'09.84" W elev 156 ft eye alt 1559 ft

1985



2840 Park Ave

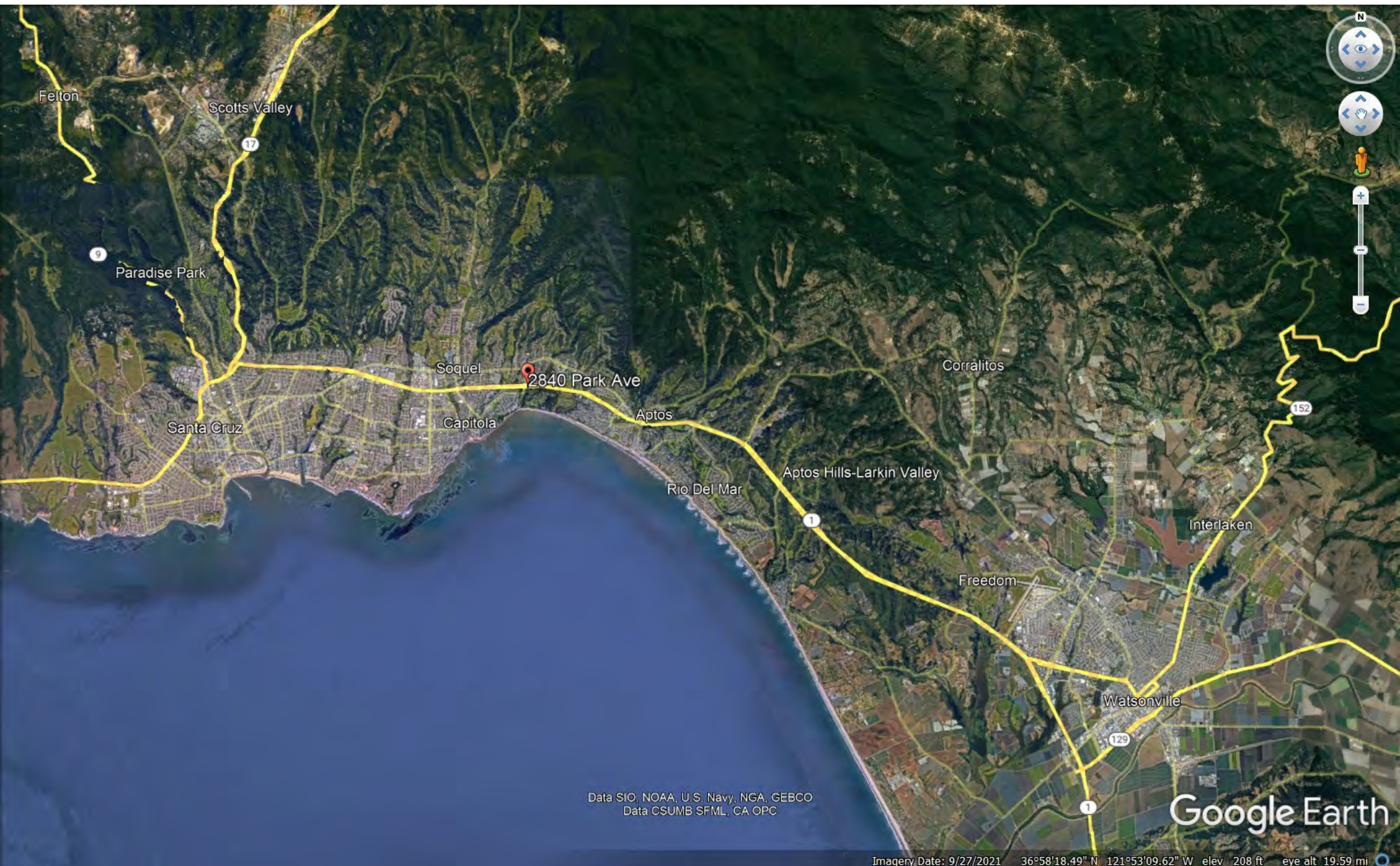
Google Earth



Google Earth

2840 Park Ave
36°59'32.24" N 121°54'28.91" W elev 278 ft eye alt 15202 ft

1985



Data SIO, NOAA, U.S. Navy, NGA, GEBCO
Data CSUMB SFML, CA OPC

Google Earth

Imagery Date: 9/27/2021 36°58'18.49" N 121°53'09.62" W elev 208 ft eye alt 19.59 mi

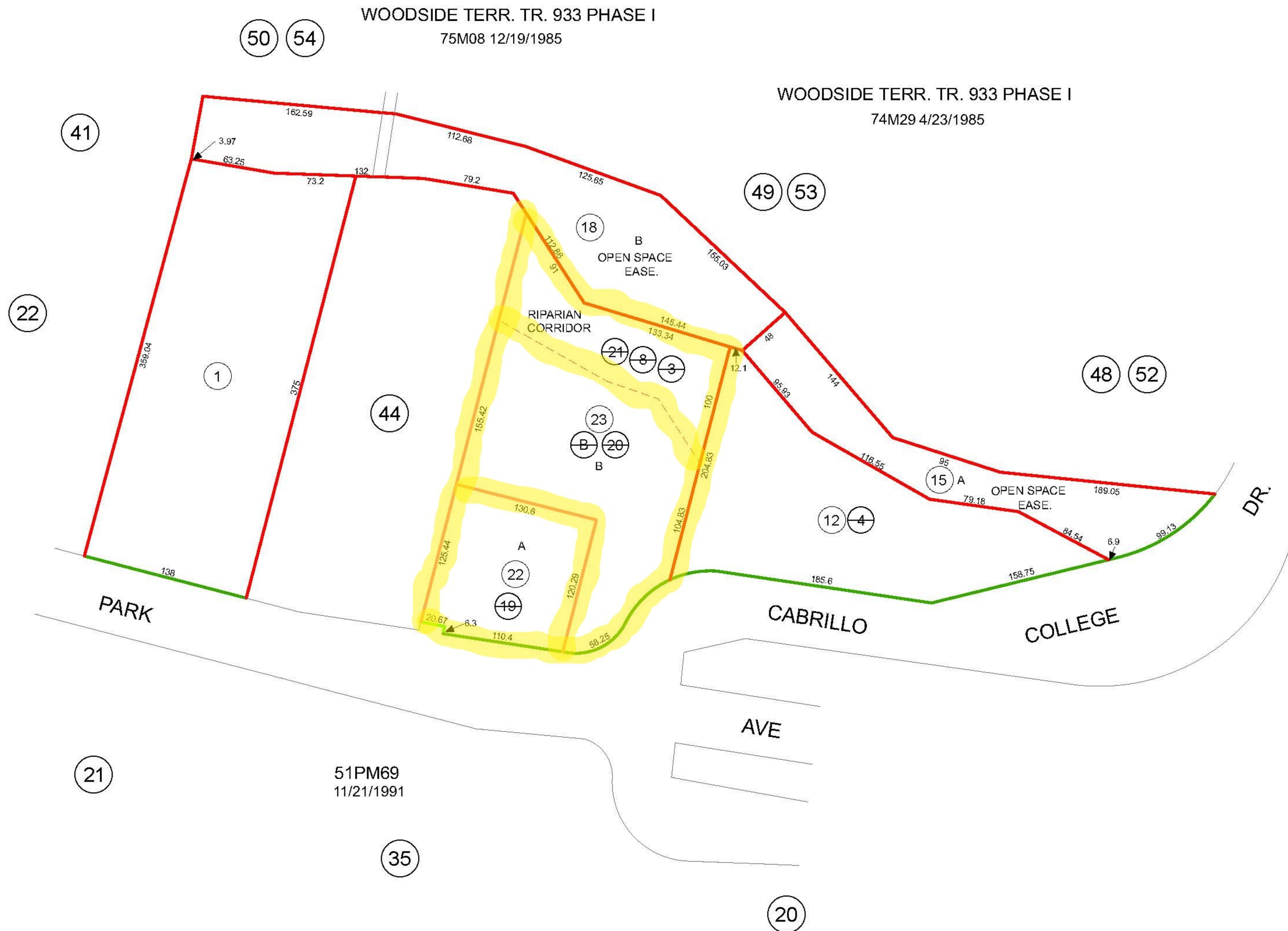
FOR TAX PURPOSES ONLY

THE ASSESSOR MAKES NO GUARANTEE AS TO MAP ACCURACY NOR ASSUMES ANY LIABILITY FOR OTHER USES. NOT TO BE REPRODUCED. ALL RIGHTS RESERVED.
© COPYRIGHT SANTA CRUZ COUNTY ASSESSOR 1998

POR. SOQUEL RANCHO
SEC. 11, T.11S., R.1W., M.D.B. & M.

Tax Area Code
96-101

37-23



45PM20
5/13/1985

Electronically Redrawn 5/1/98 rw
Rev. 4/25/01 mvm (changed page refs.)
Rev. 1/10/22 CC (Cor./comb blne 1-23)

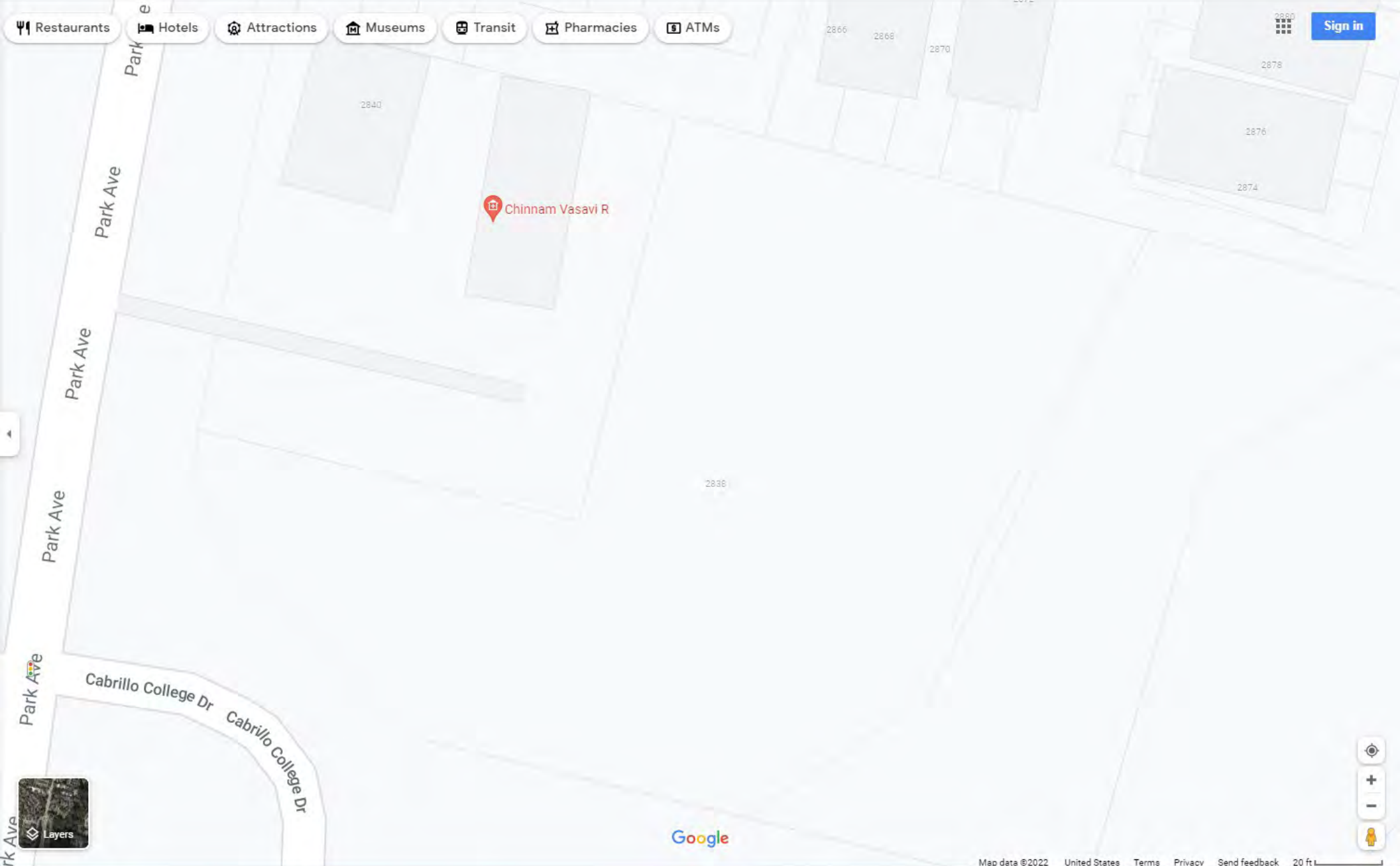
Note - Assessor's Parcel & Block
Numbers Shown in Circles.

Assessor's Map No. 37-23
County of Santa Cruz, Calif.
May, 1998

- Restaurants
- Hotels
- Attractions
- Museums
- Transit
- Pharmacies
- ATMs

Sign in

Chinnam Vasavi R

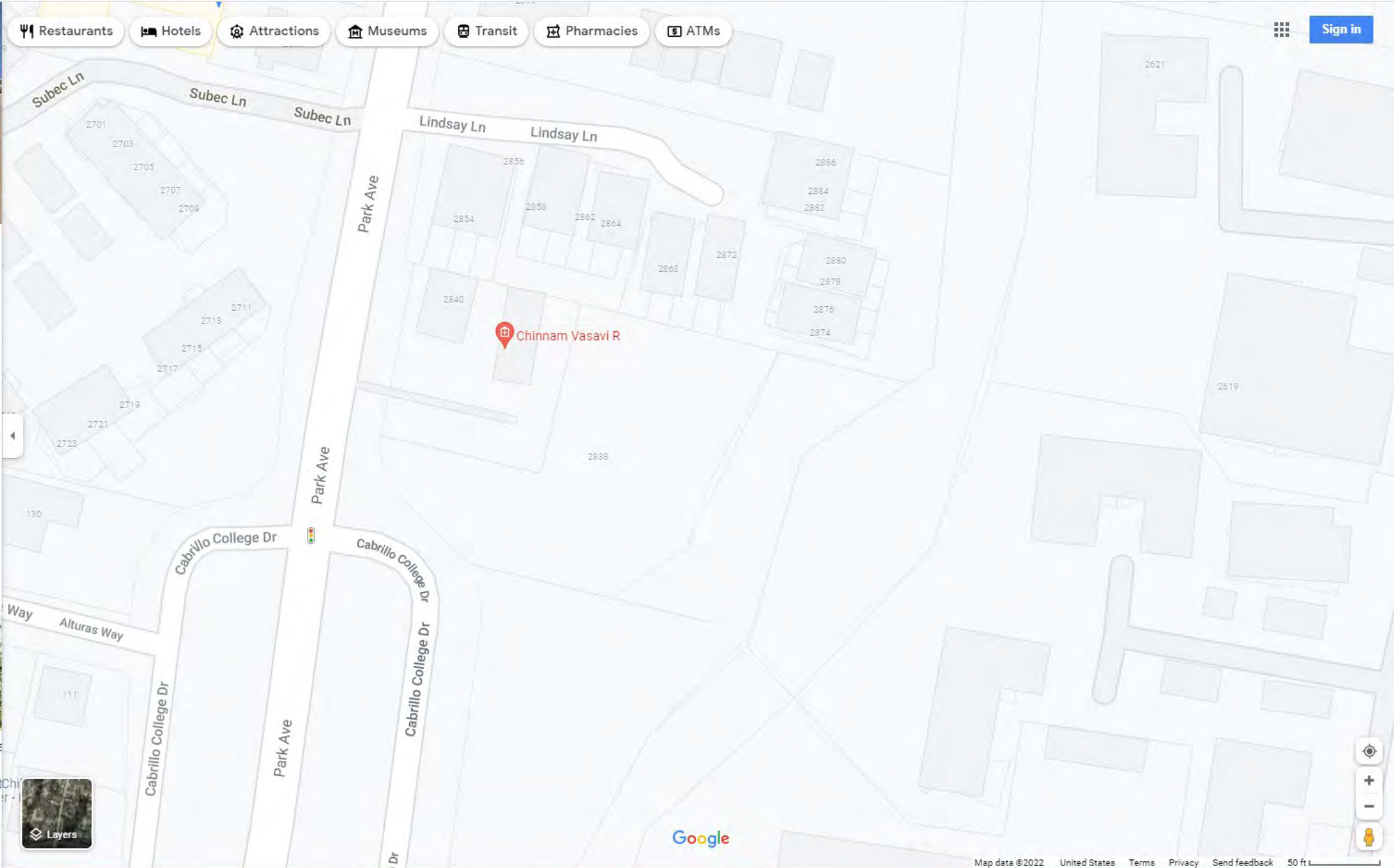


Google

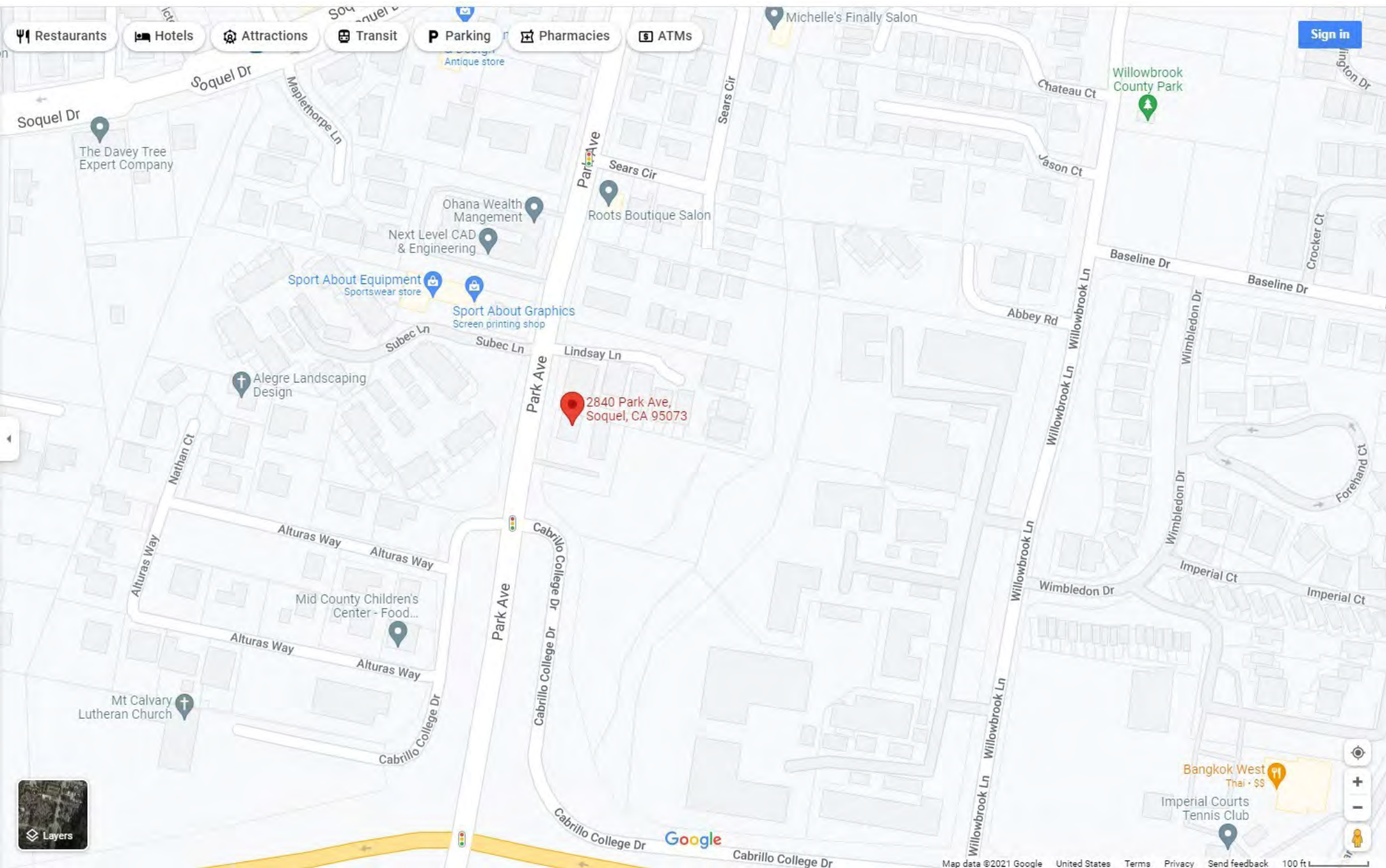


- Restaurants
- Hotels
- Attractions
- Museums
- Transit
- Pharmacies
- ATMs

Sign in



Google

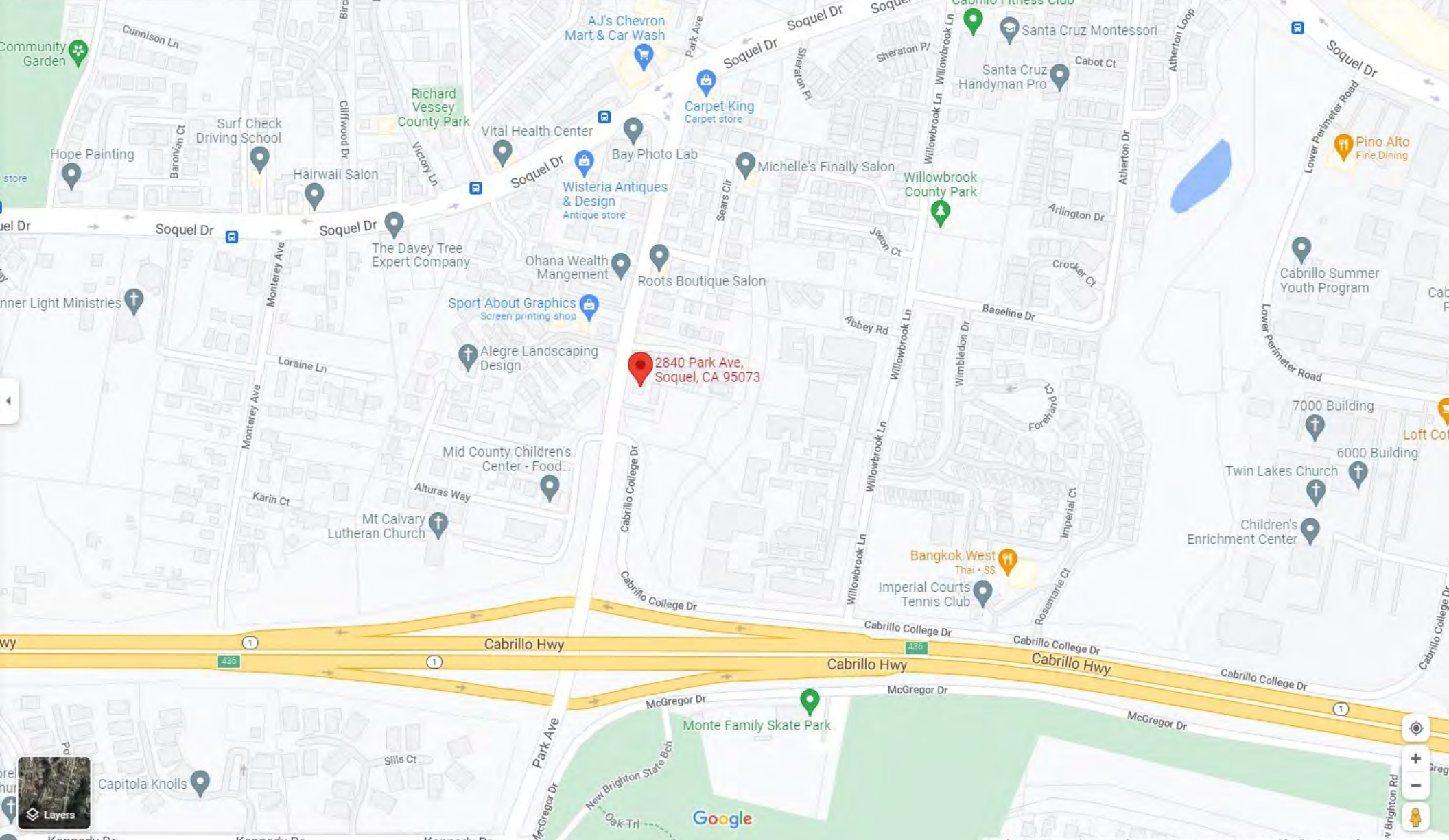


- Restaurants
- Hotels
- Attractions
- Transit
- Parking
- Pharmacies
- ATMs

Sign in

2840 Park Ave,
Soquel, CA 95073







Soquel
California
Sunny · 63°F
3:47 PM

- Directions
- Save
- Nearby
- Send to your phone
- Share

Quick facts

Soquel is an unincorporated town and census-designated place in Santa Cruz County, California, located on the northern coast of Monterey Bay. The population was 9,644 at the 2010 census. [Wikipedia](#)

Iconic Soquel



The Mystery Spot
4.5 ★ (5,854)
Iconic gravity hill offering tours



The Forest of Nis
4.8 ★ (1,106)
Outdoor destination biking

Map navigation and search interface for Soquel, CA. The map shows various landmarks, streets, and points of interest. A red outline highlights a specific area in the center of town. A yellow outline highlights a route along the coast. A blue outline highlights a route through the town. The map includes a search bar at the top left, a navigation menu at the top, and a 'Sign in' button at the top right. The bottom of the map shows the Google logo and map data information.

Soquel, CA



Soquel
California

Sunny · 63°F
3:46 PM

- Directions
- Save
- Nearby
- Send to your phone
- Share

Quick facts

Soquel is an unincorporated town and census-designated place in Santa Cruz County, California, located on the northern coast of Monterey Bay. The population was 9,644 at the 2010 census. [Wikipedia](#)

Iconic Soquel



The Mystery Spot
4.5 ★ (5,854)
Iconic gravity hill offering tours



The Forest of Nisene Marks
4.8 ★ (1,106)
Outdoor destination for biking

Restaurants Hotels Attractions Museums Transit Pharmacies ATMs

Google

Map data ©2022 Google United States Terms Privacy Send feedback 1 mi

Soquel California Boundary Map

