

SMITHGROUP

Architect
301 BATTERY STREET
7TH FLOOR
SAN FRANCISCO, CA 94111
415.227.0100
www.smithgroup.com

ARUP

MEP
ARUP
560 Mission Street, Suite 700
San Francisco, CA 94105
415.957.9445

WALKER CONSULTANTS

Parking
WALKER CONSULTANTS
601 California St, Suite 820
San Francisco, CA 94108
415.644.0630

IFLAND ENGINEERS

Civil
IFLAND ENGINEERS, INC.
5300 Soquel Avenue, Suite 101
Santa Cruz, CA 95062
831.426.5313

miyamoto. STRUCTURAL ENGINEERS

Structural
MIYAMOTO INTERNATIONAL, INC.
555 Montgomery Street, Suite 803
San Francisco, CA 94111
415.230.7097

ISSUED FOR	REV	DATE
PERMIT RESUBMITTAL		06/24/2019
PERMIT APPLICATION		03/27/2019
PRE-APPLICATION SUBMITTAL		08/23/2016

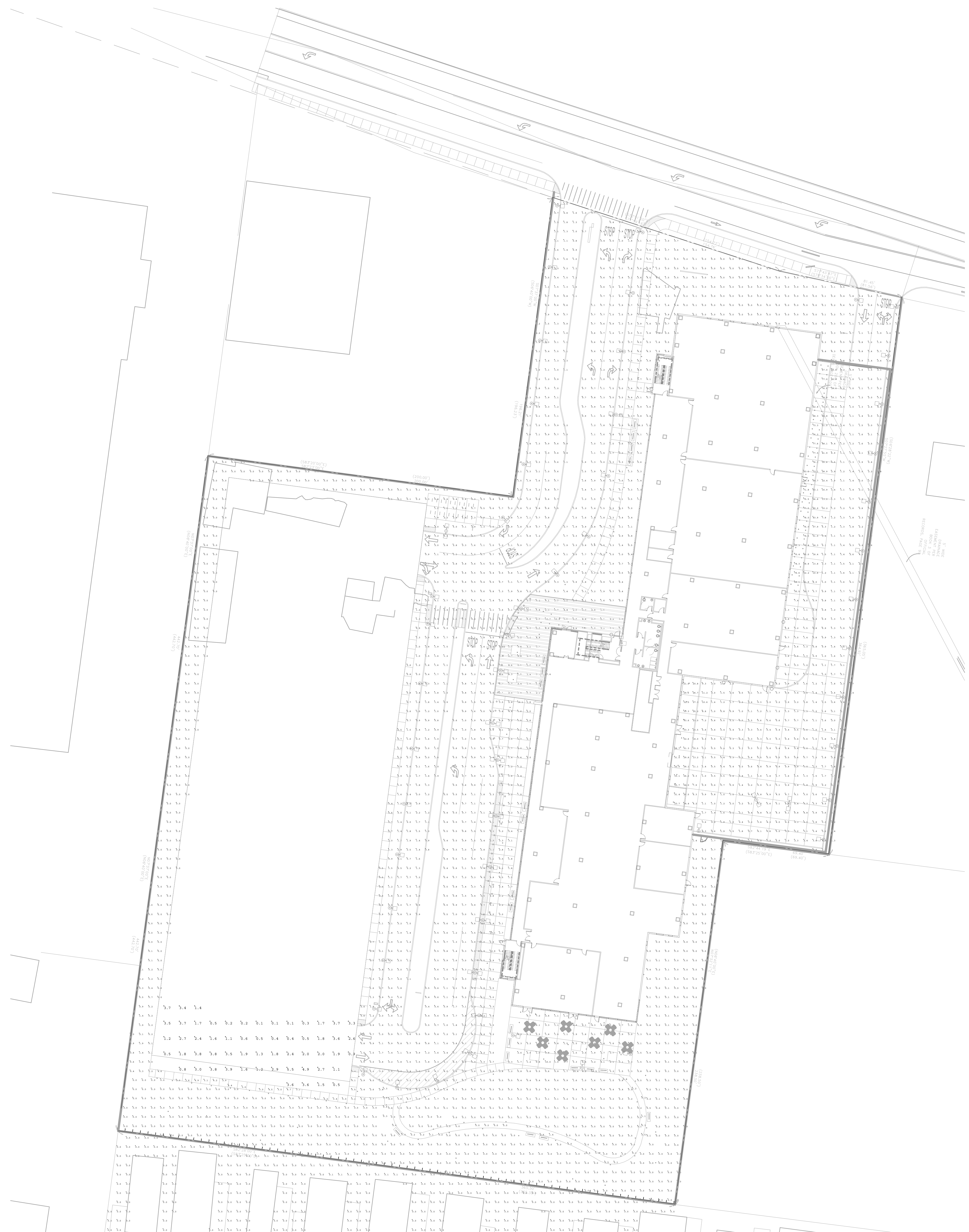
SEALS AND SIGNATURES

NOT FOR CONSTRUCTION

SHEET TITLE
SITE LIGHTING CALCULATION PLAN

PROJECT NUMBER 21739.000
SHEET NUMBER
SD **LT1.0.2**

AREA	AVERAGE	MIN	AV/MIN RATIO	MAX/MIN RATIO
MAIN ENTRY	5.5	NO REQUIREMENT	1.2	NO REQUIREMENT
EMERGENCY/AMBULANCE ENTRY	50	NO REQUIREMENT	1.7	NO REQUIREMENT
LOADING DOCK	21	NO REQUIREMENT	1.4	NO REQUIREMENT
ROADWAY MAIN	1.3	NO REQUIREMENT	1.4	1:16
ROADWAY BOH	1.3	NO REQUIREMENT	1.4	1:25
CROSSWALK	1.7	NO REQUIREMENT	1.4	NO REQUIREMENT
DROP OFF AREA (MAIN ENTRY)	2.2	NO REQUIREMENT	1.3	NO REQUIREMENT
DROP OFF AREA (EMERGENCY ENTRY)	14	NO REQUIREMENT	1:20	NO REQUIREMENT
DROP OFF AREA (LOADING DOCK ENTRY)	6	NO REQUIREMENT	1.6	NO REQUIREMENT
EGRESS PATH	2.7	1.3	1.2	NO REQUIREMENT
PRIMARY PATH (NON-EGRESS)	3	NO REQUIREMENT	1.4	NO REQUIREMENT
SECONDARY PATH PARKING (NON-EGRESS)	0.6	NO REQUIREMENT	1:02	NO REQUIREMENT
SECONDARY PATH LANDSCAPE (NON-EGRESS)	0.5	NO REQUIREMENT	1.5	NO REQUIREMENT
ADA PATH	3	NO REQUIREMENT	1:1	NO REQUIREMENT
PLAZA	3	NO REQUIREMENT	1.5	NO REQUIREMENT



1 SITE LIGHTING CALCULATIONS PLAN
1" = 30'-0"

SMITHGROUP

Architect
301 BATTERY STREET
7TH FLOOR
SAN FRANCISCO, CA 94111
415.227.0100
www.smithgroup.com

ARUP

MEP
ARUP
560 Mission Street, Suite 700
San Francisco, CA 94105
415.957.9445

WALKER CONSULTANTS

Parking
WALKER CONSULTANTS
601 California St, Suite 820
San Francisco, CA 94108
415.644.0630

IFLAND ENGINEERS

Civil
IFLAND ENGINEERS, INC.
5300 Soquel Avenue, Suite 101
Santa Cruz, CA 95062
831.426.5313

miyamoto. STRUCTURAL ENGINEERS

Structural
MIYAMOTO INTERNATIONAL, INC.
555 Montgomery Street, Suite 803
San Francisco, CA 94111
415.230.7097

ISSUED FOR REV DATE

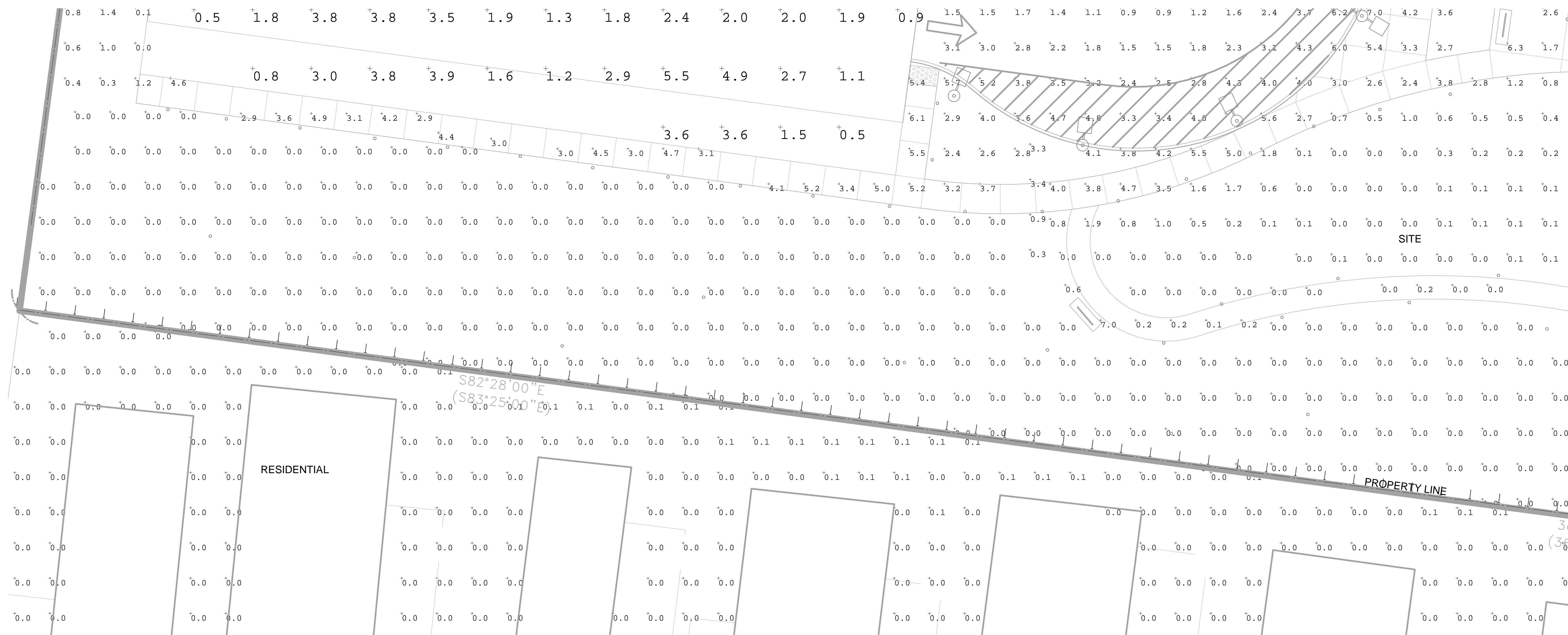
PERMIT RESUBMITTAL 06/24/2019
PERMIT APPLICATION 03/27/2019
PRE-APPLICATION SUBMITTAL 08/23/2018

SEALS AND SIGNATURES

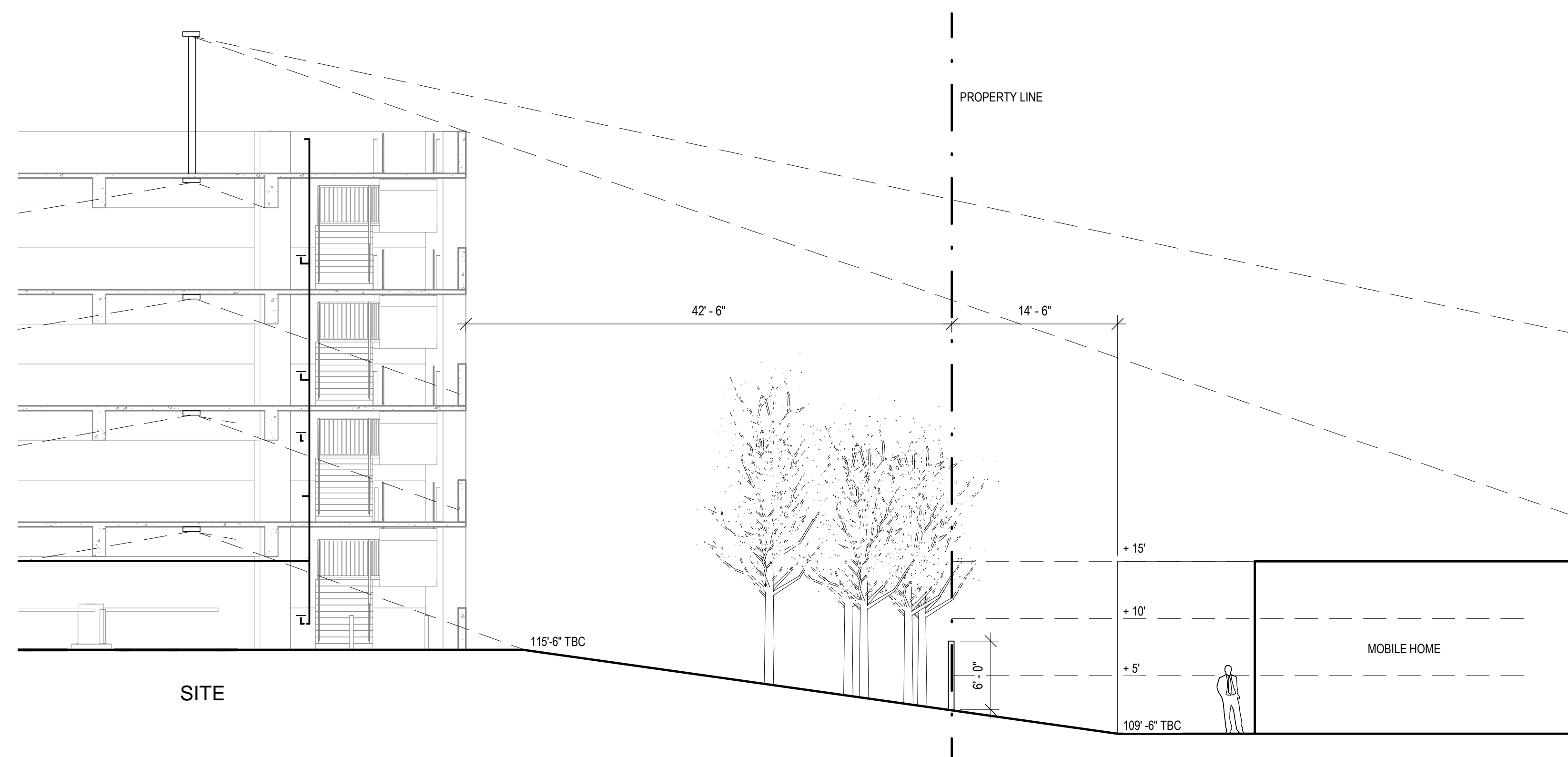
NOT FOR CONSTRUCTION

SHEET TITLE
SITE LIGHTING SIGHT LINES STUDY

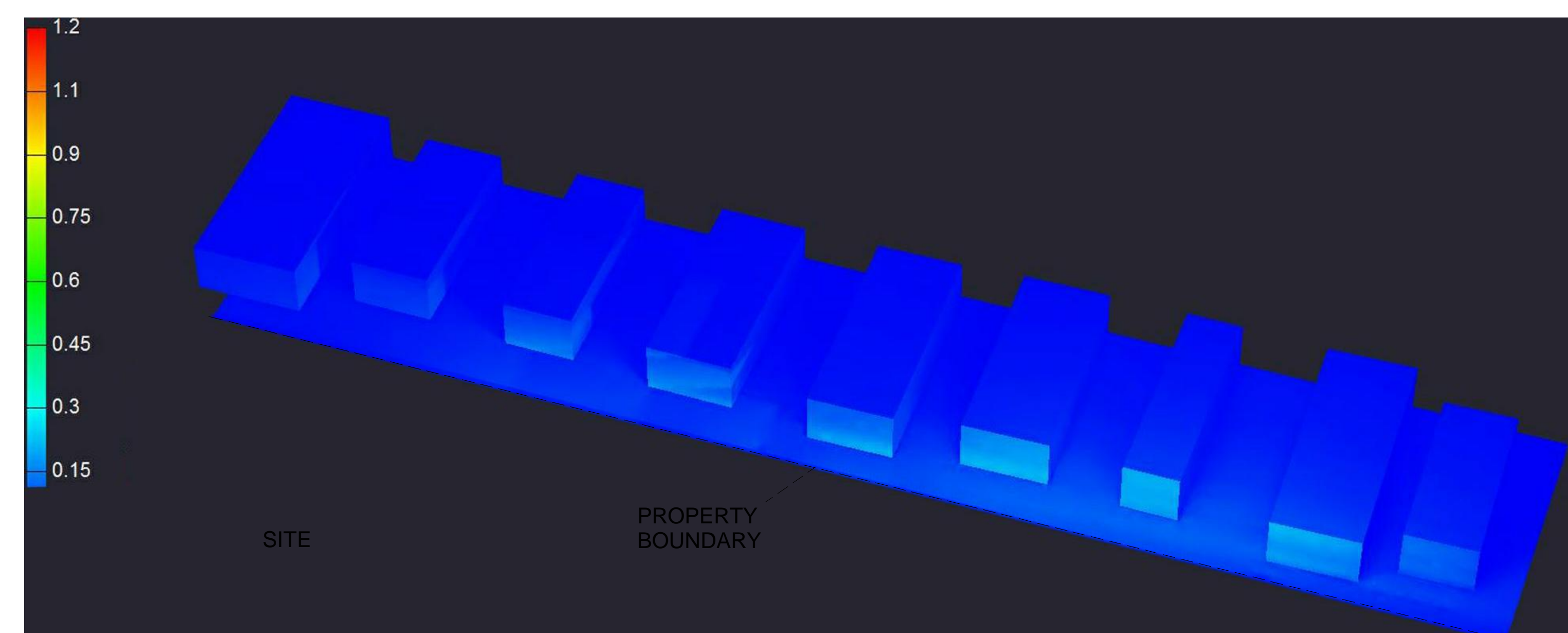
PROJECT NUMBER 21739.000
SD **LT2.0.1**
SHEET NUMBER



1 SITE LIGHTING PLAN CALC ZOOM
1/8" = 1'-0"



2 SIGHT LINE STUDY SECTION
1/8" = 1'-0"



3 ILLUMINANCE LEVELS BEYOND SIDE BOUNDARY LINE ON SOUTH SIDE - PSEUDO COLOR RENDERING

MAX. CALCULATED ILLUMINANCE LEVEL AT SITE BOUNDARY IS 0.6 FC. CALCULATION WAS PERFORMED WITHOUT THE INCLUSION OF TREES THAT WOULD MITIGATE THE IMPACT OF SPILL LIGHT FROM THE DEVELOPMENT. THE LANDSCAPE DESIGN AND ARCHITECTURAL DESIGN DETAILS WILL BE COORDINATED TO LIMIT THE AMOUNT OF LIGHT FALLING BEYOND THE SITE BOUNDARY.