



W A T E R   D E P A R T M E N T

212 Locust Street, Suite C Santa Cruz CA 95060 Phone (831) 420-5200 Fax (831) 420-5201

September 12, 2018

MidPen Housing Corporation  
275 Main St, Suite 204  
Watsonville, CA 95076

Re: APN 026-741-12, 13, 14 & 15 – 1412, 1438, 1500 & 1514 Capitola Rd, Santa Cruz County, CA  
Proposed New Mixed-Use Development (Live Oak Town Center), consisting of a Dental & Health  
Clinics and a 60-Unit Affordable Residential Housing Community

Dear MidPen Housing Corporation:

This letter is to advise you that the subject parcel is located within the service area of the Santa Cruz Water Department and potable water is currently available for normal domestic use and fire protection. Service will be provided to each and every lot of the development upon payment of the fees and charges in effect at the time of service application and upon completion of the installation, at developer expense, of any water mains, service connections, fire hydrants and other facilities required for the development under the rules and regulations of the Santa Cruz Water Department. The development will also be subject to the City's Landscape Water Conservation requirements.

At the present time:

- the required water system improvements are not complete; and
- financial arrangements have not been made to the satisfaction of the City to guarantee payment of all unpaid claims.

This letter will remain in effect for a period of two years from the above date. It should be noted, however, that the City Council may elect to declare a moratorium on new service connections due to drought conditions or other water emergency. Such a declaration would supersede this statement of water availability.

If you have any questions regarding service requirements, please call the Engineering Division at (831) 420-5210. If you have questions regarding landscape water conservation requirements, please contact the Water Conservation Office at (831) 420-5230.

Sincerely,

*RM*  
Rosemary Menard  
Water Director

RM/js  
Cc. SCWD Engineering



# Santa Cruz County Sanitation District

701 OCEAN STREET, SUITE 410, SANTA CRUZ, CA 95060-4073  
(831) 454-2160 FAX (831) 454-2089 TDD/TTY- CALL 711

MATT MACHADO, DISTRICT ENGINEER

October 22, 2018

KAREN GOMEZ  
MIDPEN HOUSING CORPORATION  
275 MAIN ST., SUITE 204  
WATSONVILLE, CA 95076

SUBJECT: SEWER AVAILABILITY AND DISTRICT'S CONDITIONS OF  
SERVICE FOR THE FOLLOWING PROPOSED DEVELOPMENT

APN: 027-741-12, 027-741-13, 026-741-14 and 026-741-15

APPLICATION NO.: N/A

PARCEL ADDRESS: 1412, 1438, 1500, AND 1514 CAPITOLA RD., SANTA CRUZ, CA 95062

PROJECT DESCRIPTION: CONSTRUCT 60 NEW RESIDENTIAL UNITS AND 2  
COMMERCIAL SPACES.

Dear Ms. Gomez:

We've received your inquiry regarding sewer service availability for the subject parcel(s). Sewer service is available in Capitola Road for the subject development.

There is one downstream area with a very minor capacity concern known at this time, but it will not negatively affect approval of your proposed connections. However, downstream sewer requirements will again be studied at time of Planning Permit review, at which time the District reserves the right to add or modify downstream sewer requirements.

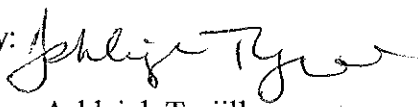
This notice is valid for one year from the date of this letter. If, after this time frame, this project has not yet received approval from the Planning Department, then this determination of availability will be considered to have expired and will no longer be valid.

Also, for your reference, we have attached a list of common items required during the review of sanitation projects.

Thank you for your inquiry. If you have any questions, please call Robert Hambelton at (831) 454-2160.

Yours truly,

MATT MACHADO  
District Engineer

By:   
Ashleigh Trujillo  
Sanitation Engineer

RLH:tlp/267

## Common Items Required During the Review of Sanitation Projects

**What to show on the drawings:** When you begin the design process, please show:

On the plot/site/utility plan:

1. location of any **existing** on-site sewer lateral(s), clean-out(s), and connection(s) to existing public sewer on the site (plot) plan.
2. location of any **proposed** on-site sewer lateral(s), clean-out(s), and connection(s) to existing public sewer on the site (plot) plan.

Place a note, "*Existing*" or "*(E)*", on each existing item that is to be removed.

Place a note, "*To be removed*", on each existing item that is to be removed.

Place a note, "*New*" or "*(N)*", on each item that is to be new.

On a floor plan:

1. all plumbing fixtures both existing and new (label "*(E)*" or "*(N)*") on a floor plan of the entire building. Completely describe all plumbing fixtures according to table T-702.1 of the California Plumbing Code.

(Sanitation District Code sections 7.04.040 and 7.04.430)

### **Design and Construction Standards**

The project sewer design and connection of the project to the Santa Cruz County Sanitation District system will be required to conform to the County of Santa Cruz Design Criteria (CDC) Part 4, Sanitary Sewer Design, February 2017 edition.

Reference for County Design Criteria:

<http://www.dpw.co.santa-cruz.ca.us/Portals/19/pdfs/DESIGNCRITERIA.pdf>

### **Demolition and sewer abandonment**

If the proposed plans will involve some demolition, the existing sewer lateral(s) must be properly abandoned (including inspection by District) prior to issuance of demolition permit or relocation or disconnection of structure. An abandonment permit (either temporary or permanent) for disconnection work must be obtained from the District. This process is often overlooked until the last minute and can result in unnecessary delays, and you are encouraged to plan for the relatively short time and small expense to fulfill this requirement. There is no charge for either permit or inspection.

(Sanitation District Code section 7.04.410)

### **New Connection**

If the proposed plans will involve one or more new sewer connections, we must issue a new sewer connection permit for each new connection. The final connection charges can be determined only after the District and, as needed, other Department of Public Works divisions have reviewed and approved the final engineered sewer improvement plans. (Sanitation District Code section 7.04.410)

### **Inspection of existing lateral for new or remodel construction**

If the development will involve the reuse of an existing sewer lateral for a new or remodeled structure, then, before the approval of the building permit, the applicant shall have the sanitary sewer system inspected and certified by a licensed plumber to be in good working order and free of obstructions and breaks. Repairs shall be made to any damaged or deteriorated pipe, misalignment of pipe segments, leaking pipes, root intrusion, open joints, cracks or breaks, sags, damaged or defective cleanout, inflow and infiltration of extraneous water, older pipe materials that are known to be inadequate, inadequate lift or pump stations, inadequate alarm systems for overflows, and inadequate maintenance of lift stations. You must obtain a sewer repair permit (no charge) from the District and shall have repairs inspected by the District inspector (no charge) prior to backfilling of pipe or structure.

(Sanitation District Code section 7.04.375.A.3 Private Sanitary Sewer System Repair)

### **Increase in the number of plumbing fixtures**

If the proposed plans will involve an increase in the fixture unit count for the existing sewer connection, additional fixture unit fees may be due. The exact amount will be calculated at the time a Sewer Connection Permit is issued. (Sanitation District Code section 7.04.040)

### **Tentative, parcel, or final map required**

When any new *tentative, parcel, or final* map is required, please show the following on the improvement plans:

1. All adjacent or impacted roads and easements,
  2. All on- and off-site sewer improvements needed to provide service to each lot or unit proposed.
- The plans must conform to the County's "Design Criteria."

If a tentative, parcel, or final map is NOT required, please provide to the District written proof of recordation (in the form of copies of the recorded documents) of any and all existing or proposed easement(s).

### **Non-residential water use**

Provide to the District a written estimate the amount of domestic water (average gallons per day) that will be used on this parcel after it is fully developed. You may need to engage an engineer or other knowledgeable person to provide an accurate estimate. This information will be used in the determination of both fees and waste pretreatment requirements. Connection permits can only be issued after these requirements are determined. (Sanitation District Code section 5.04.100)

### **Multi-unit development with a private collector line**

If the development will require a private collector line serving several separate units or parcels, which will be individually and separately owned, prior to any land split or building permit, the applicant must form a homeowners' association with ownership and maintenance responsibilities for all on-site sewers for this project. Please reference this homeowner's association directly on the *tentative map* and *final map*, as well as in the Association's recorded CC&R's. Please record those CC&R's, and provide a copy of the recorded documents, with proof of recordation, to the District prior to the filing of the final map.

### **Backflow prevention device**

Backflow preventive devices may be required. While this determination is often made "in the field" at the time of installation, if you are engaging a surveyor, civil engineer, or knowledgeable contractor, there is nothing to prevent you from making that determination while in the design process. (Sanitation District Code section 7.04.100 and 7.04.375.A.4)

### **Pre-escrow or Pre-transfer Cleanout and Overflow devices**

If approved cleanout and overflow devices have not yet been installed, then prior to close of escrow, an approved cleanout and overflow devices must be installed at the owners sole cost, and be inspected by the District Inspector. (Sanitation District Code section 7.04.375.A.4.c) It is recommended that the HOA and CC&R's are set up to require the HOA to cover the cost of recording the inspections of all private collector lines at least every 10 years, making all required repairs (see next item below), re-recording the inspection to show all repairs complete, and making those videos available to individual owners at the time of sale. This will help avoid excessive costs being born by the first person to sell a unit 20 years after the initial construction, as well as documenting efforts at complying with the code required maintenance of the sewer system.

### **Pre-escrow plumber's inspection of existing lateral**

If the development will involve the reuse of an existing sewer lateral for a residential use, if the existing buildings or structures on this parcel that are connected to a sewer main were constructed more than 20 years before the date of sale, and if the private sewer system has not been inspected within the past twenty years, then, before the close of escrow, the property seller shall have the sanitary sewer system inspected and certified by a licensed plumber to be in good working order and free of obstructions and breaks. The testing and any repair shall be the responsibility of the seller, nontransferable to the buyer. Repairs shall be made to any damaged or deteriorated pipe, misalignment of pipe segments, leaking pipes, root intrusion, open joints, cracks or breaks, sags, damaged or defective cleanout, inflow and infiltration of extraneous water, older pipe materials that are known to be inadequate, inadequate lift or pump stations, inadequate alarm systems for overflows, and inadequate maintenance of lift stations. You must obtain a sewer repair permit (no charge) from the District and shall have repairs inspected by the District inspector (no charge) prior to backfilling of pipe or structure. (Sanitation District Code section 7.04.375.A.3 Private Sanitary Sewer System Repair).

Attachment O: **Community Facilities, Services and Parks**

References available online:

City of Santa Cruz 2015 Urban Water Management Plan

<http://www.cityofsantacruz.com/home/showdocument?id=55168>

Santa Cruz County Parks Strategic Plan 2018

[http://scparcs.com/Portals/12/pdfs/strategic%20plan/FinalStrategicPlan\\_Aug6\\_email.pdf](http://scparcs.com/Portals/12/pdfs/strategic%20plan/FinalStrategicPlan_Aug6_email.pdf)

Sewer System Management Plan 2019 Audit

Davenport, Freedom, Santa Cruz County Sanitation Districts and the County of Santa Cruz

[http://www.dpw.co.santa-](http://www.dpw.co.santa-cruz.ca.us/Portals/19/pdfs/Sanitation/SCCSD/pdf/SSMP%202019%20AUDIT%20FINAL.pdf?ver=2019-11-27-100508-227&timestamp=1574877917823)

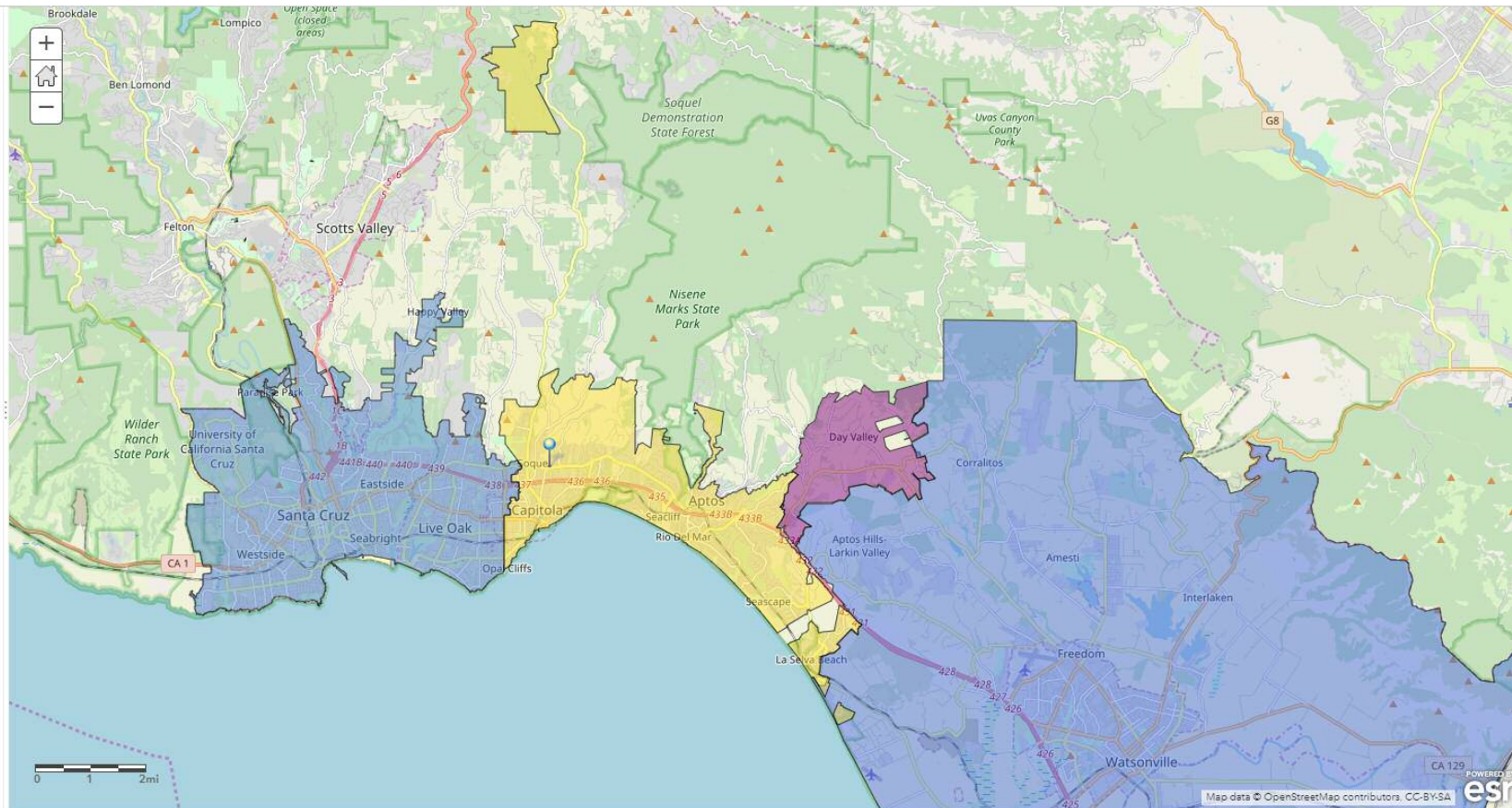
[cruz.ca.us/Portals/19/pdfs/Sanitation/SCCSD/pdf/SSMP%202019%20AUDIT%20FINAL.pdf?ver=2019-11-27-100508-227&timestamp=1574877917823](http://www.dpw.co.santa-cruz.ca.us/Portals/19/pdfs/Sanitation/SCCSD/pdf/SSMP%202019%20AUDIT%20FINAL.pdf?ver=2019-11-27-100508-227&timestamp=1574877917823)

[About](#)
[Content](#)
[Legend](#)

**Legend**

- Water Service Boundaries - Soquel Creek Water District
- Water Service Boundaries - Santa Cruz Water Department
- Water Service Boundaries - Pajaro Valley Water Management Agency
- Water Service Boundaries - Central Water District

[Trust Center](#)
[Legal](#)
[Contact Esri](#)
[Report Abuse](#)







## EMS

Central Fire Protection District provides first response Advanced Life Support (ALS) Paramedic services to Capitola City and the unincorporated areas of Soquel and Live Oak in Santa Cruz County. Three Captain Paramedics (1 assigned per shift) who report to an Emergency Medical Services (EMS) Battalion Chief facilitate the delivery of high quality and effective patient care through a staff of 18-21 Paramedics. The District operates 7 fully equipped ALS fire apparatus with 4 being fully staffed 24 hours a day, 365 days a year with a minimum of one Paramedic and two Emergency Medical Technicians (EMT). The District is a participant in Master Mutual Aid in the event of major disasters.



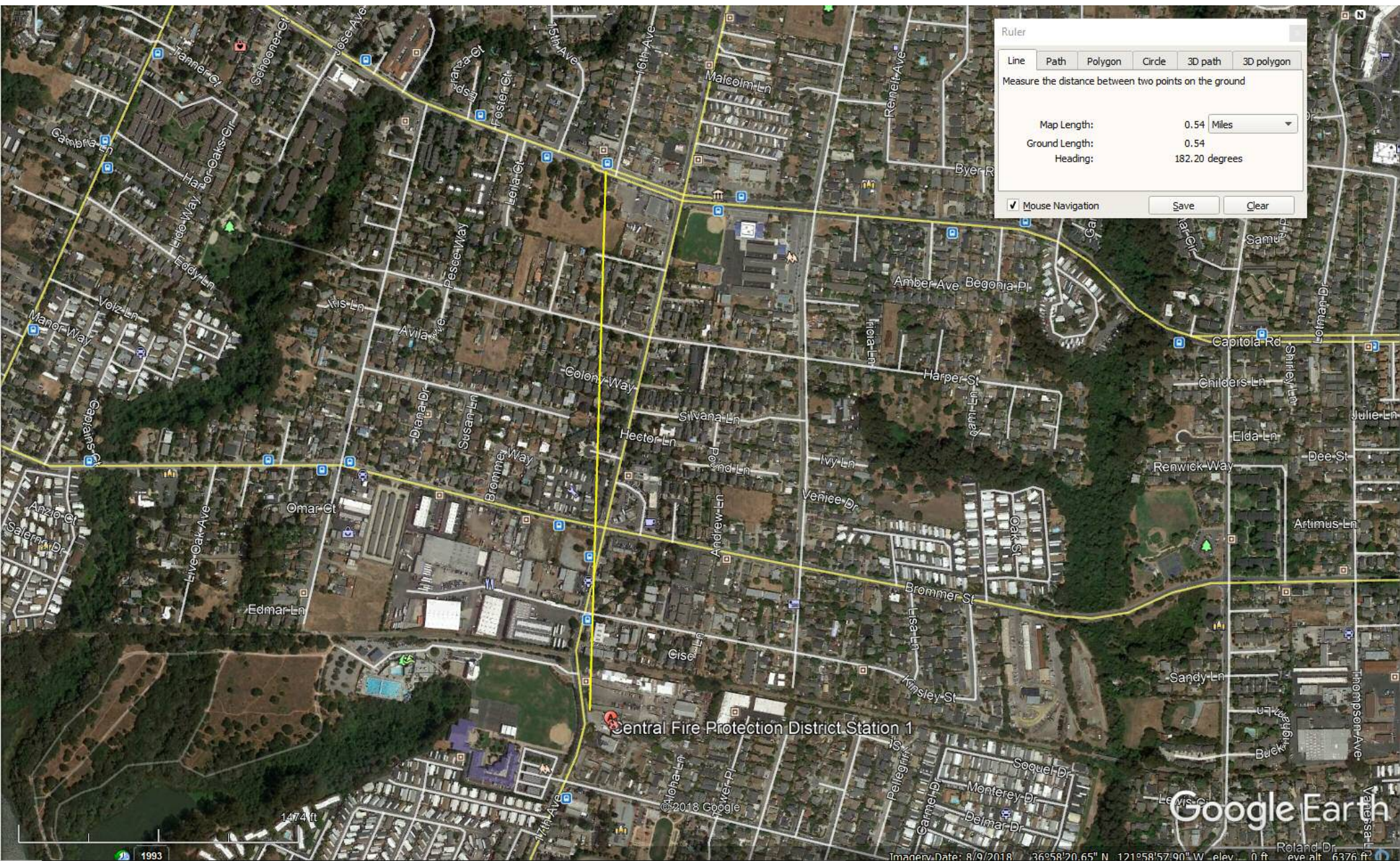
The District's EMS division is an active participant in the Santa Cruz County Emergency Medical Services System-Participating in EMS Subcommittees and sits as a representative in the EMS Section of the Santa Cruz County Fire Chief's Association. The District is one of the founding members of the JPA known as the Santa Cruz County Emergency Medical Services Integration Authority (EMSIA). The EMSIA has been recognized by the State of California's EMS Authority as a Continuing Education Provider for Paramedics (ALS) and Emergency Medical Technicians (EMT).

The District is a participant in Santa Cruz County's Electronic EMS patient care record (PCR) system. The PCR system captures patient data upon receipt of a 9-1-1 call, through the EMS response,

and into the hospital. The District is committed to the protection of an individual's private patient healthcare information as referenced in the Health Insurance Portability and Accountability Act (HIPAA) of 1996.

Santa Cruz County EMS has a contract with a third party ambulance transport provider for the ground transport of all patients. The delivery of exceptional EMS in Santa Cruz County involves the utilization of ALS helicopter service providers. The District routinely works with the various transport providers in order to rapidly transport critical patients from its beaches, commercial, industrial, urban and rural areas to definitive care. The District in coordination with Santa Cruz County EMS, the EMSIA and member agencies conducts extensive in-service training on a routine basis to insure the most up to date EMS skills, procedures, and practices are implemented and delivered to the citizens and visitors of the district.





Ruler

Line Path Polygon Circle 3D path 3D polygon

Measure the distance between two points on the ground

Map Length: 0.54 Miles

Ground Length: 0.54

Heading: 182.20 degrees

Mouse Navigation Save Clear

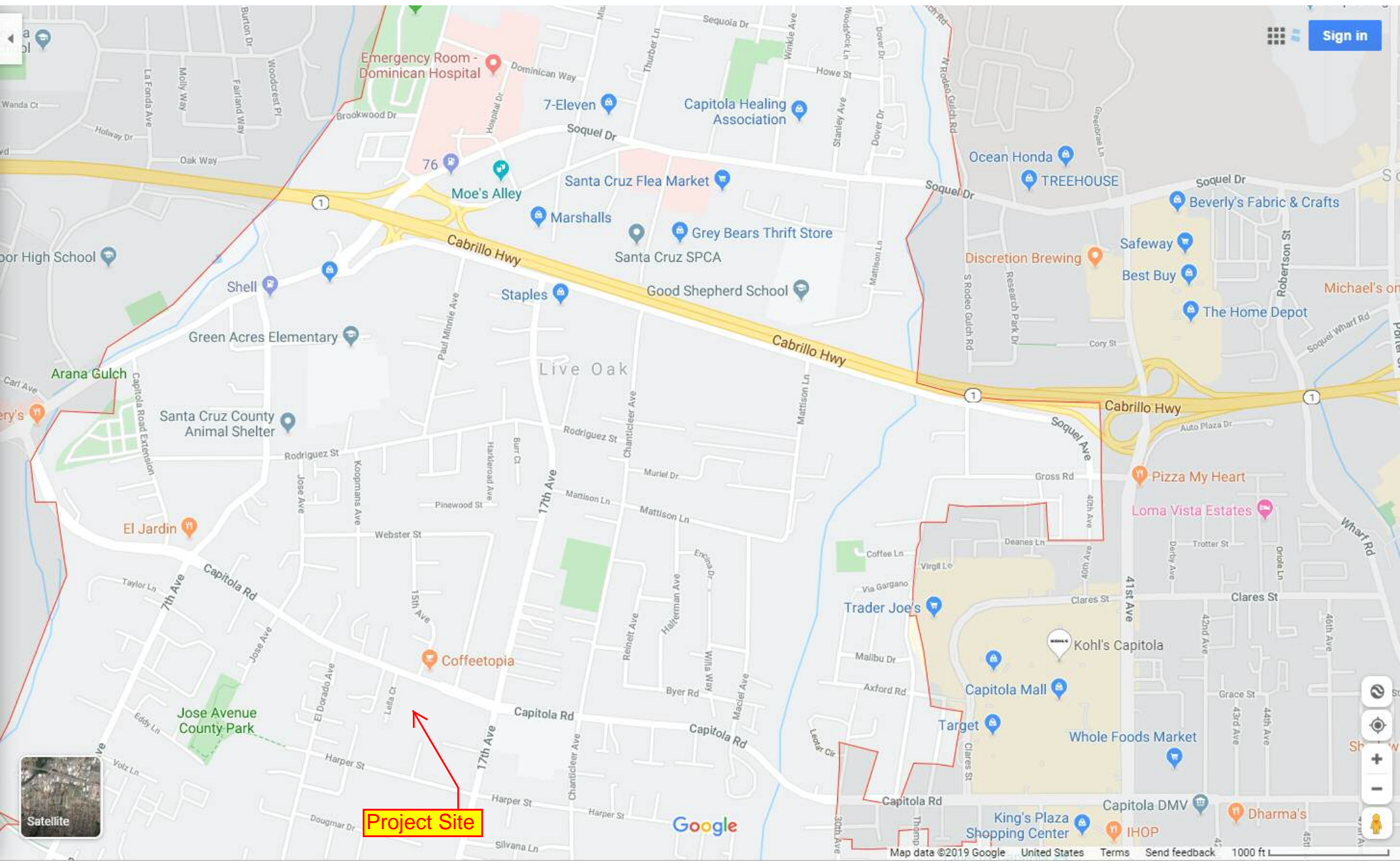
Central Fire Protection District Station 1

Google Earth

1993

Imagery Date: 8/9/2018 36°58'20.65" N 121°58'57.90" W elev: 0 ft eye alt: 6376 ft





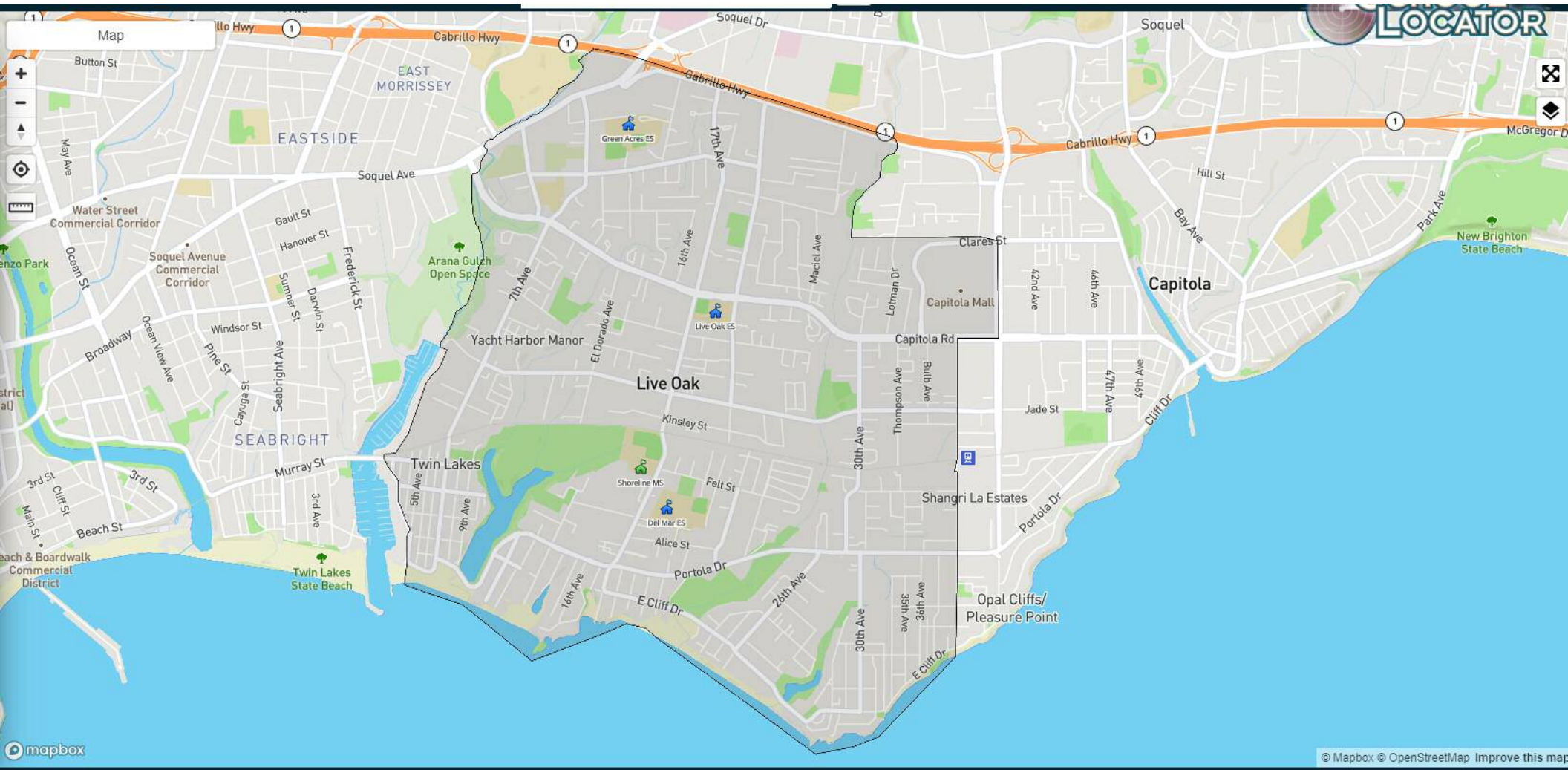
Project Site

Sign in

Satellite

Google

Map data ©2019 Google United States Terms Send feedback 1000 ft



LOCATOR

Map



mapbox

© Mapbox © OpenStreetMap Improve this map



**Cypress High School**  
 4.8 ★★★★★ (8) · High school  
 2039 Merrill St · In Del Mar Elemen...  
 Closed · Opens 8:30AM Mon  
 · (831) 477-0302

[WEBSITE](#) [DIRECTIONS](#)

---

**Shoreline Middle School**  
 4.3 ★★★★★ (19) · Middle school  
 855 17th Ave  
 (831) 475-6565

[WEBSITE](#) [DIRECTIONS](#)

---

**VHM Christian School**  
 3.7 ★★★★★ (3) · Elementary sc...  
 427 Capitola Road Extension  
 Closed · Opens 7AM Mon  
 · (831) 475-4762

[WEBSITE](#) [DIRECTIONS](#)

---

**Live Oak Elementary School**  
 No reviews · Elementary school  
 1916 Capitola Rd  
 (831) 475-2000

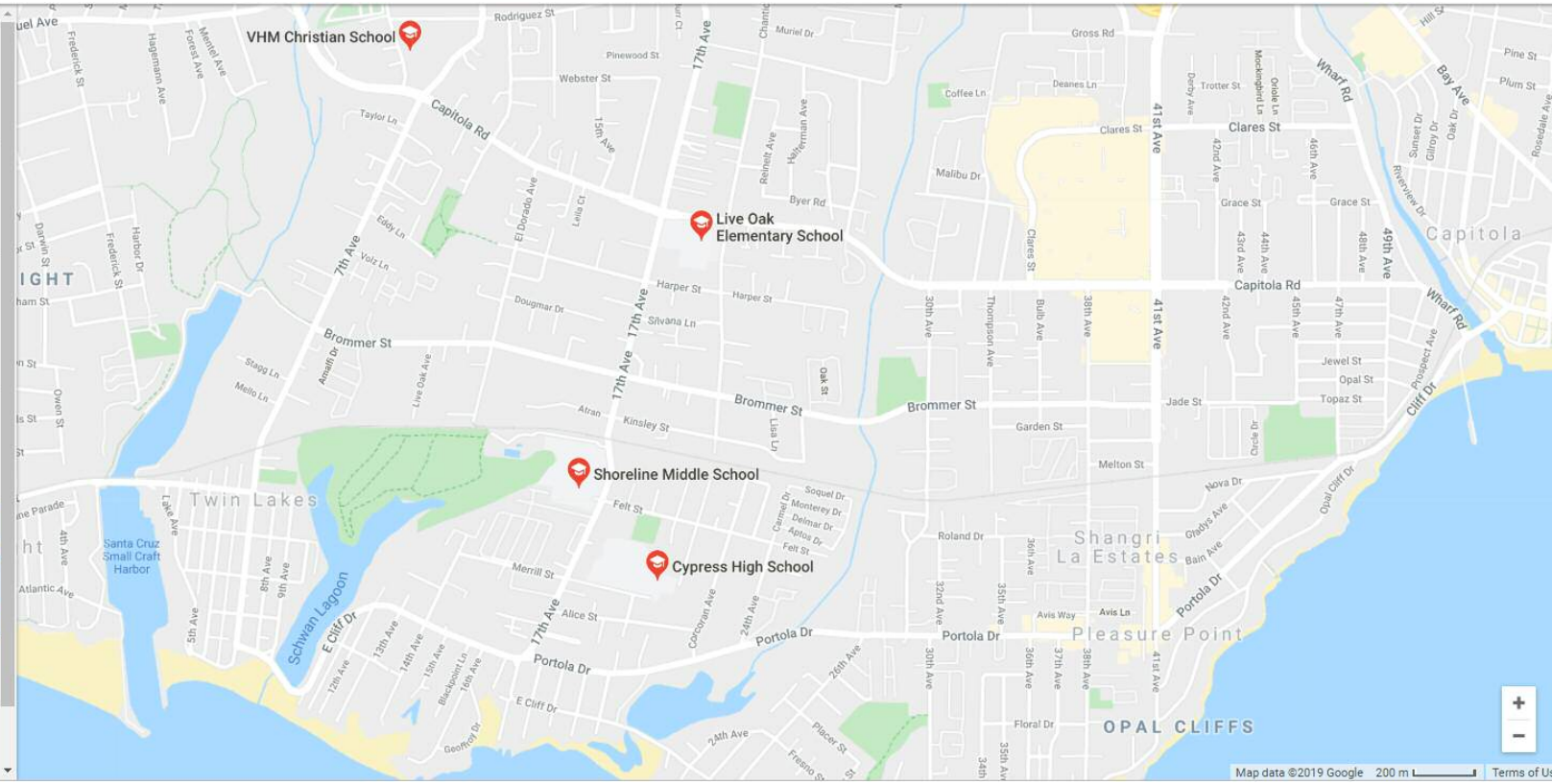
[WEBSITE](#) [DIRECTIONS](#)

---

Can't find what you are looking for?  
[ADD A MISSING PLACE](#)

---

● 95628, California - From your Internet address  
 Use precise location - Learn more







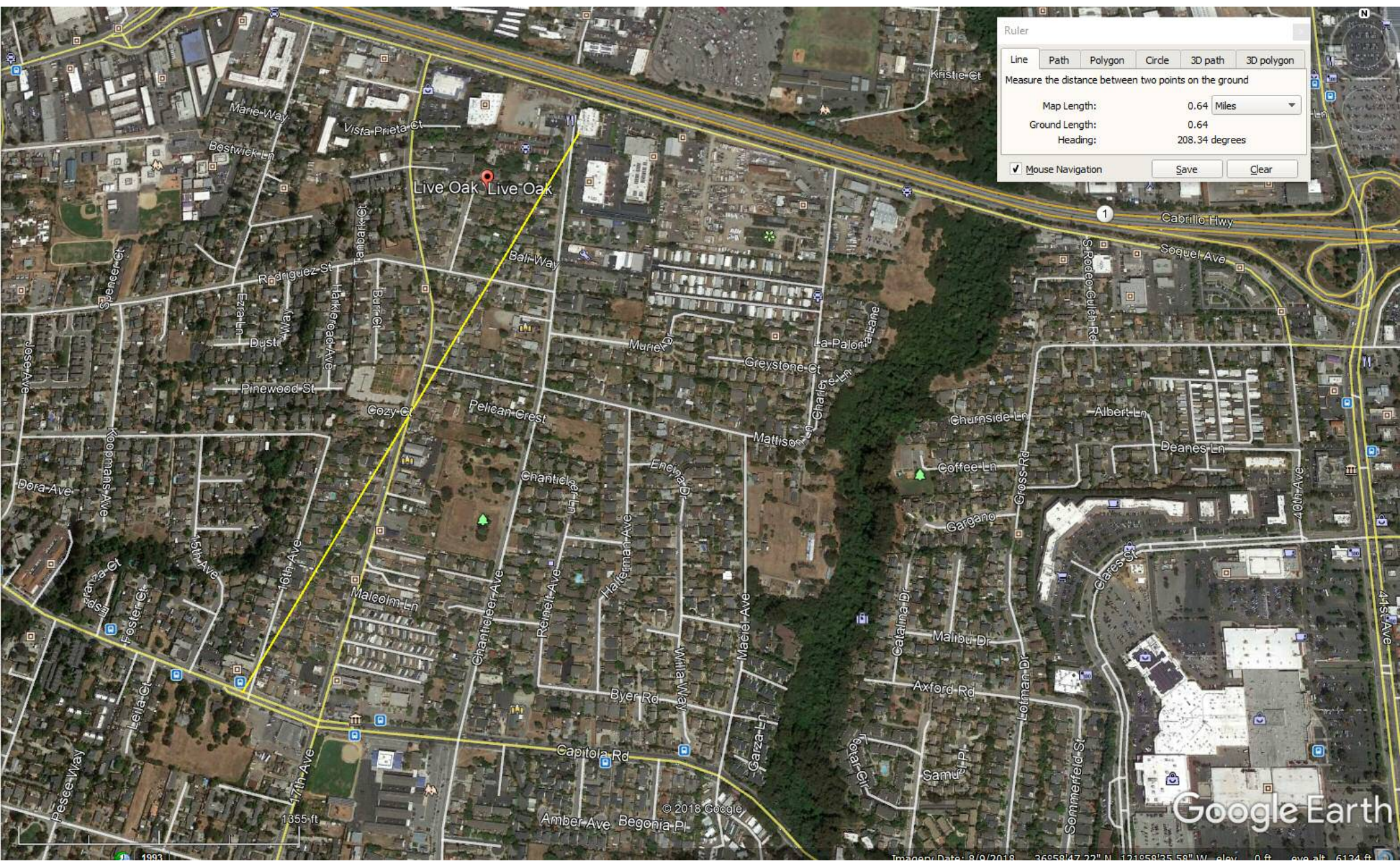
Monterey Bay

# Santa Cruz County Sanitation District



0 0.25 0.5 1 Miles





Ruler

Line	Path	Polygon	Circle	3D path	3D polygon
Measure the distance between two points on the ground					
Map Length:		0.64 Miles			
Ground Length:		0.64			
Heading:		208.34 degrees			

Mouse Navigation Save Clear

1991

1355 ft

© 2018 Google

Image Date: 8/9/2018 36°58'47.22" N 121°58'35.58" W elev: 0 ft eye alt: 6134 ft



← Rating ▾ Hours ▾

**Santa Cruz County CalFresh**

4.3 ★★★★★ (77) · Social servic...  
1020 Emeline Ave  
Closed · Opens 8AM Mon  
(831) 454-4165



**Santa Cruz Child Support Services**

3.5 ★★★★★ (17) · Social servic...  
420 May Ave  
Closed · Opens 8AM Mon  
(866) 901-3212



**Santa Cruz Child Protective**

1.0 ★☆☆☆☆ (4) · Social servic...  
1400 Emeline Ave # K  
(831) 454-4222



**Santa Cruz Adult Protective**

1.0 ★☆☆☆☆ (1) · Social servic...  
1400 Emeline Ave  
(831) 454-4101



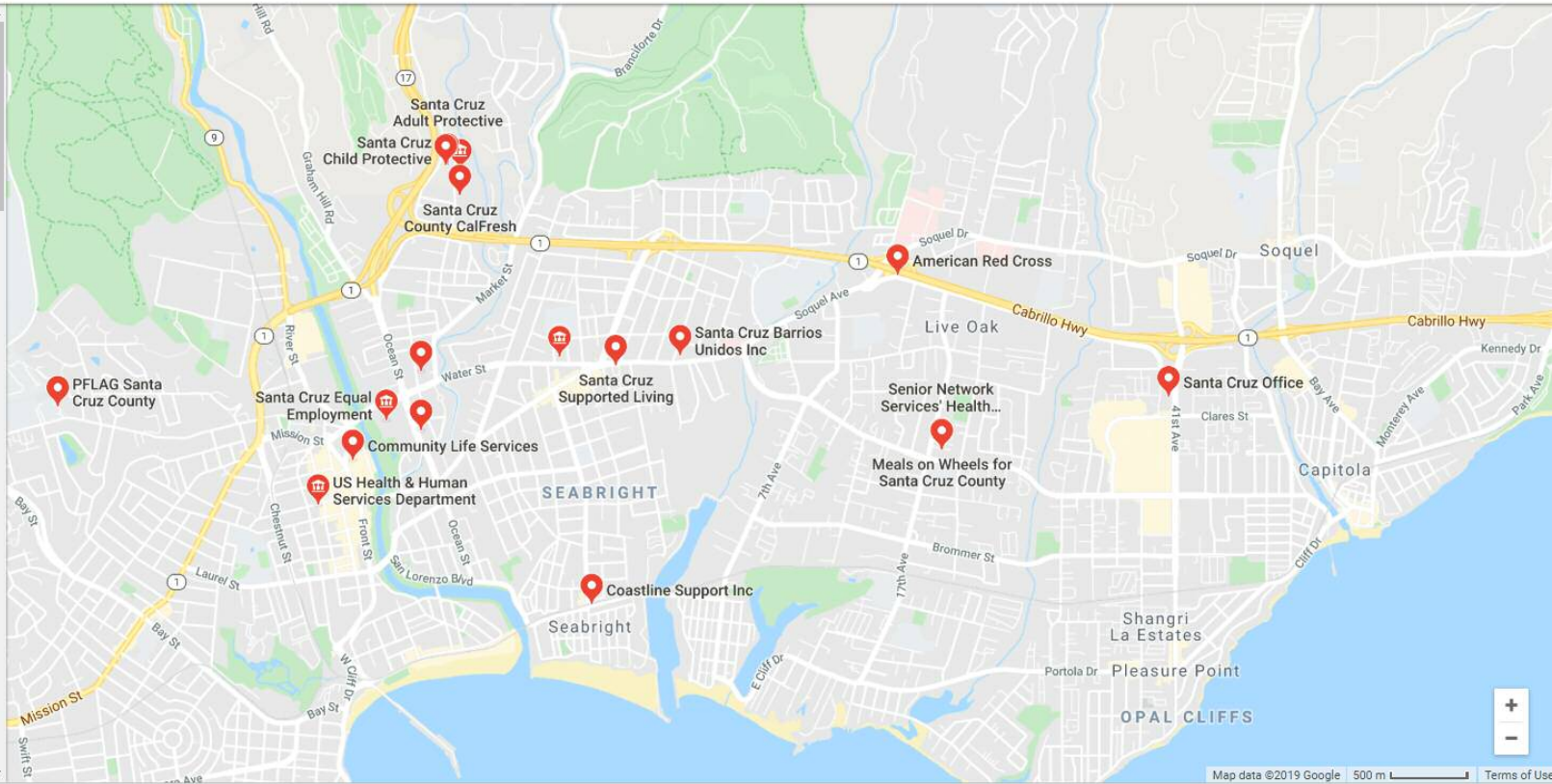
**Meals on Wheels for Santa Cruz County**

5.0 ★★★★★ (5) · Social servic...  
1777 Capitola Rd  
Closed · Opens 9AM Mon  
(831) 464-3180



**PFLAG Santa Cruz County**

No reviews · Social services organi...  
900 High St · In Coastal Communit...  
(831) 427-4016







# COUNTY OF SANTA CRUZ PARKS, OPEN SPACE & CULTURAL SERVICES




- [Santa Cruz County Home](#)
- [Parks, Open Space & Cultural Services Home](#)
- [Advisory Bodies & Community Partners](#)
- [Arts & Cultural Programs](#)
- [Book a Facility](#)
- [Employment & Volunteering](#)
- [Parks](#)
- [Recreation Programs](#)
- [Simpkins Family Swim Center](#)

You are here: [Home](#) » [Parks](#) » [List of All County Parks](#)

[Food Trucks at 701 Ocean St. and Emeline Ave.](#)   [Simpkins Family Swim Center](#)

## List of All County Parks

-click  to get directions-

- Abbott Square - 110 Cooper St, Santa Cruz** 
- [Aldridge Lane Park](#) - 20 Aldridge Lane, Corralitos 
- [Anna Jean Cummings Park](#) - 461 Old San Jose Rd, Soquel 
- [Aptos Village Park](#) - 100 Aptos Creek Road, Aptos 
- [Ben Lomond Park](#) - 9525 Mill Street, Ben Lomond 
- Bert Scott Estate - 301 Eagle Ridge, Watsonville** 
- [Brommer Street Park](#) - 1451 30th Avenue, Live Oak 
- Chanticleer Park - 1975 Chanticleer Ave, Live Oak** 
- [Coffee Lane Park](#) - End of Coffee Lane, Live Oak 
- Davenport Landing - Highway 1, Davenport** 
- Dolphin/Sumner Beach - Dolphin/Sumner Intersection, Aptos**
- The Farm Park - Northwest corner of Soquel Drive and Cunnison Lane** 
- [Felt Street Park](#)- 1904 Felt Street, Live Oak 
- [Felton Covered Bridge](#) - Graham Hill Rd at Mount Hermon Rd, Felton 
- [Floral Park](#) - 656 38th Avenue, Live Oak 
- Freedom Lake - located along Freedom Blvd in Freedom, CA** 
- Greyhound Rock - Highway 1, Davenport** 
- [Heart of Soquel](#) - 4740 Soquel Drive behind Soquel Village Post Office 
- Hestwood Park - 1230 Harper Street, Santa Cruz** 
- [Hidden Beach Park](#) - End of Cliff Drive, Aptos 
- [Highlands Park](#) - 8500 Highway 9 Ben Lomond, CA 
- [Jose Avenue Park](#) - 1435 Jose Ave, Live Oak 
- [Mesa Village Park](#) - 790 Green Valley Road, Watsonville 
- [Michael Gray Memorial Field](#) - 3650 Graham Hill Road, Felton 
- Miller Property - located along Kings Creek Road in Boulder Creek**
- [Moran Lake Park](#) - East Cliff Drive by 26th Avenue, Live Oak 
- Old Jail/Octagon - 118 Cooper St, Santa Cruz** 
- Pace Family Wilderness - located along Newell Creek Road in Boulder Creek**
- Pajaro Dunes - Shell Road, Watsonville** 
- [Pinto Lake Park](#) - 757 Green Valley Road, Watsonville 
- Place Del Mer - East of Hillview Way in Watsonville**
- Pleasure Point Park - Pleasure Point Dr. and East Cliff Dr, Capitola** 
- [Polo Grounds](#) - 2255 Huntington Avenue, Aptos 
- [Quail Hollow Ranch](#) - 800 Quail Hollow Road, Felton 
- Richard Vessey - Victory Ln./Maplethorpe, Soquel**
- Santa Cruz Gardens - Katherine Lane, Santa Cruz**
- Scott Creek Beach - Highway 1, Davenport** 

- [Scott Park](#) - 3101 Freedom Blvd, Watsonville 
- [Seacliff Village Park \(McGregor\)](#) - 120 Canterbury Dr., Aptos 
- [Seascape Park](#) - End of Sumner Ave, Aptos 
- [Simpkins Family Swim Center](#) - 979 17th Avenue, Santa Cruz 
- [Soquel Lions](#) - Main/E. Walnut, Soquel
- [Sunny Cove Beach](#) - End of Johans Beach Drive and Sunny Cove Drive Veteran's Building 
- [Twin Lakes Park](#) - 520 7th Avenue, Live Oak 
- [Valencia Hall](#) - 2555 Valencia Road, Aptos 
- [Wilder Hall](#) - 9527 Mill St, Ben Lomond 
- [Willowbrook Park](#) - 2950 Willowbrook Lane, Soquel 
- [Winkle Farm](#) - 3201 Winkle Ave. 
- [Veteran's Memorial Building](#) - 846 Front Street, Santa Cruz 

**Santa Cruz County Department of Parks, Open Space and Cultural Services**  
979 17th Avenue, Santa Cruz, CA 95062  
General Information (Monday-Friday, 9:00 a.m. - 4:00 p.m.)  
Phone: (831) 454-7901 • [PRCweb@santacruzcounty.us](mailto:PRCweb@santacruzcounty.us)

 SHARE    ...



[Terms Of Use](#) | [Privacy Statement](#)

© 2019 Santa Cruz County Parks



**Santa Cruz County Parks**

979 17<sup>th</sup> Avenue

Santa Cruz CA, 95062

Ph: (831) 454-7901 – Fax (831) 454-7940

[www.scparks.com](http://www.scparks.com)

**Adopt-A-Beach Permit Application**

*Please print all information*

Thank you for your participation in the Adopt-A-Beach program. Please review this packet, then fill out and sign the application. When the application has been approved, you will receive written confirmation.

Applicant/ Contact Person: \_\_\_\_\_

Organization Name (if applicable): \_\_\_\_\_

Address \_\_\_\_\_

City \_\_\_\_\_ State \_\_\_\_\_ Zip Code \_\_\_\_\_

Day Phone (\_\_\_\_) \_\_\_\_\_ Cell Phone (\_\_\_\_) \_\_\_\_\_

Email Address \_\_\_\_\_ Fax (\_\_\_\_) \_\_\_\_\_

Requested beach or beach access location(s):  
\_\_\_\_\_

Requested beach clean-up date(s) and times:  
\_\_\_\_\_

Requested materials and quantity needed for beach clean-up (trash and/or recycle bags, gloves, etc.):  
\_\_\_\_\_

**Please return the following documentation to the Facilities office after the beach clean-up:**

- \_\_\_ Adopt-A-Beach Group Participation Agreement and Indemnification Form (if applicable)
- \_\_\_ Adopt-A-Beach Waiver of Liability and Express Assumption of Risk  
(to be signed by all participants, or parent/guardian if under 18)

For more information about the California Coastal Commission's Adopt-A-Beach program, please refer to their website: [www.coastal.ca.gov/publiced/aab/aab1.html](http://www.coastal.ca.gov/publiced/aab/aab1.html). Save Our SHores provides additional information about local beach cleanups on their website: <http://saveourshores.org/volunteer/adopt-a-beach/>.

**Disclaimer:**

The undersigned states: The information I have provided to Parks is true and correct; If this Permit is issued to a group or entity, I am the authorized representative of the group or entity, and I am empowered to make this agreement on its behalf; I have received a copy of the Terms and Conditions and Assumption, Waiver, and Indemnity documents, and have read and understand them. Both individually and on behalf of the group or entity, I agree to them, and will comply with them as well as all laws and ordinances of the County of Santa Cruz, the State of California, and the United States.

\_\_\_\_\_  
Permitee Signature

\_\_\_\_\_  
Date

**Department Use Only**

Parks Department Approval: \_\_\_\_\_

Confirmed Date: \_\_\_\_\_ Contract # \_\_\_\_\_

**ADOPT-A-BEACH GROUP PARTICIPATION AGREEMENT  
AND INDEMNIFICATION FORM**

WHEREAS \_\_\_\_\_, and the California  
(Group/School Name)

Adopt-A-Beach Program recognize the need and the desirability of litter-free beaches; and

WHEREAS, the California Adopt-A-Beach Program recognizes our group as an adopting school or organization for  
\_\_\_\_\_, and  
(Adopted Beach)

WHEREAS, our group recognizes the potentially hazardous nature of beach cleanup activities, and desires to protect the health and safety of ie cleanup participants:

Now, therefore, our group agrees to inform cleanup participants of safe methods to use in carrying our beach cleaning activities; and

FURTHER, \_\_\_\_\_  
(Name of Participating Group/School)

agrees to indemnify and hold harmless, the State of California, the California Coastal Commission, the California State Parks, the California State Parks Foundation, all other organizers or sponsors or property owners involved in the Adopt-A-Beach program, and any of their respective employees, officers, agents, or assigns (hereafter collectively referred to as "Released Parties") from any claim of liability for personal injury, property damage, or wrongful death, arising out of, or connected with the group's participation in Adopt-A-Beach activities however caused, including but not limited to the negligence of the released parties, whether passive or active.

FURTHER, our group is aware that during the scheduled beach cleanups, volunteers from outside our groups may be assigned to our group's section of beach, and

FURTHER, our group accepts the responsibility of caring for the beach and promoting awareness in our community of the problems caused by marine debris and the need for protecting coastal and ocean resources for a period of one year, beginning \_\_\_\_\_, 20 \_\_\_\_\_, with cleanups scheduled on the following dates:

1st \_\_\_\_\_ 2nd \_\_\_\_\_ 3rd \_\_\_\_\_

Signed \_\_\_\_\_  
(Authorized Group Leader/School Official)

**GENERAL INFORMATION**

Name of Group \_\_\_\_\_

Contact Person \_\_\_\_\_

Address \_\_\_\_\_

Phone (w) \_\_\_\_\_ (h) \_\_\_\_\_

Approximate number of people in the group \_\_\_\_\_

Beach Manager \_\_\_\_\_

**ADOPT-A-BEACH WAIVER OF LIABILITY AND EXPRESS ASSUMPTION OF RISK**

(PLEASE READ CAREFULLY)

I, \_\_\_\_\_, HEREBY CERTIFY THAT I AM AWARE OF THE INHERENT HAZARDS OF A BEACH CLEANUP.

I agree as follows: 1. I am volunteering my services for the Adopt-A-Beach program (“the Event”) on a voluntary basis without ant of payment of any kind; 2. I will perform assigned tasks that are within my physical capability to the best of my ability, and I will not undertake tasks that are beyond my ability; 3. I am familiar with the safe operation and use of equipment and tools that I may utilize in connection with this volunteer activity, and I will not undertake to use any equipment or tools with which I am unfamiliar or do not know how to operate safely; 4. I acknowledge that I have received and read appropriate instruction regarding this Event, including appropriate safety and emergency procedures, and that I fully understand those instructions and that I agree, after proper inspection, to use only the supplies, tools and equipment provided by the Event organizers; 5. I will perform only those tasks assigned, observe all safety rules, and use care in the performance of my assignments; 6. I specifically acknowledge that I am engaging in this activity as a volunteer, at my own request and risk, and not as a State of California or Foundation employee, agent, official, officer or representative, and further acknowledge that I am not entitled to any compensation, benefit or insurance coverage from the State of California, the Department of Parks and Recreation, the California Coastal Commission, the California State Parks Foundation, the County of Santa Cruz Parks, or any Event promoter or sponsor, nor will I make any such claim,

I understand and agree that neither the State of California, California Coastal Commission, California Department of Parks and Recreation, California State Parks Foundation, the County of Santa Cruz Parks, nor any other organizers or promoters or sponsors or property owners involved in this event, nor any of their respective employees, officers, agents or assigns, (hereinafter collectively referred to as “Released Parties”), may be held liable or responsible in any way for any injury, death or other damages to me or my family, heirs, or assigns that may occur as a result of my participation in this activity, or as a result of product liability or the negligence of any party, including Released Parties, whether passive or active.

I understand that cleaning up beaches and waterfront areas involves certain inherent risks, ‘including but not limited to, the risks of possible injury, infection or loss of life as a result of contact with needles, condoms, metal objects, burning embers or other hazardous materials found on the bench, or from over-exertion or environmental conditions. Despite these risks, I still choose to proceed in such activity. I know of no physical limitation which should keep me from undertaking the activities associated with this Event. In Consideration for being allowed to participate in this activity, I hereby personally assume all risks in connection with the Event for any harm, injury or damage that may befall me as a participant, including all risks connected therewith, whether foreseen or unforeseen. I further save and hold harmless said activity and Released Parties from any claim or lawsuit for personal injury, property damage, or wrongful death, by me, my **fa state**, heirs, or assigns, arising out of participation in this activity, including both claims arising during the activity and after I complete the activity.

If I should become injured while participating in the Event, I authorize any physician or surgeon licensed in the State of California to perform emergency or surgical treatment as in his or her sole judgment may be necessary. I further declare that I am eighteen and legally competent to sign this liability release, or that I have acquired the written consent of my parent or guardian. I understand that the terms herein are contractual and not a mere recital, that this instrument is a legally binding, and that I have signed this document of my own, free act.

**BY THIS INSTRUMENT I DO HEREBY EXEMPT AND RELEASE ALL “RELEASED PARTIES,” AS DEFINED ABOVE, FROM ALL LIABILITY OR RESPONSIBILITY WHATSOEVER FOR PERSONAL INJURY, PROPERTY DAMAGE OR WRONGFUL DEATH, HOWEVER CAUSED, INCLUDING NEGLIGENCE OF THE RELEASED PARTIES, WHETHER PASSIVE OR ACTIVE.**

**I HAVE FULLY INFORMED MYSELF OF THE CONTENTS OF THIS LIABILITY RELEASE AND ASSUMPTION OF RISK BY READING IT BEFORE I SIGNED IT ON BEHALF OF MYSELF AND MY HEIRS.**

\_\_\_\_\_  
Spelling of Participant’s Name                      Date                      Address                      Phone

\_\_\_\_\_  
Signature of Participant    Address

**IF PARTICIPANT IS UNDER 18, THE PARENT(S) (OR GUARDIAN(S), IF ANY) MUST SIGN.**

**The above participant has my permission to participate in the Adopt-A-Beach program. I have read and agree to the provisions stated above. I know of no health limitations which may restrict this volunteer’s participation in this activity.**

\_\_\_\_\_  
Signature of Parent(s) or Legal Guardian(s)                      Date                      Phone                      Address

\_\_\_\_\_  
Signature of Parent(s) or Legal Guardian(s)                      Date                      Phone                      Address



**Santa Cruz County Parks**  
979 17<sup>th</sup> Avenue  
Santa Cruz CA, 95062  
Ph: (831) 454-7901 – Fax (831) 454-7940  
[www.scparks.com](http://www.scparks.com)

## Outdoor Facility Conditions of Use

**Hours:** Parks facilities may be reserved daily between 10:00 AM - Dusk. Outdoor facilities must be reserved for a minimum of 2 hours Monday through Friday, and 8 hours Saturday, Sunday and Holidays. The hourly rate may be applied to reservations made within 21 days of the desired date.

**Reservations:** Reservations are made on a first come, first served basis and can be made up to one year in advance. Minors are not eligible to reserve facilities. Full payment is required when the reservation is made.

**Alcohol:** Alcohol consumption is not permitted in the County Parks outdoor facilities.

**Sound Permit:** Public address systems, electronic equipment, live music and amplification are subject to certain restrictions determined by individual facilities. A Sound Permit is required for any event using these devices.

**Time Limits:** Entrance to the facility is limited to the time approved on the permit. If time limits are exceeded, the permittee will be charged an overtime rate of 1-1/2 times the hourly rental rate.

**Cancellations:** Reservations may be cancelled in person or in writing not less than 14 days prior to the scheduled event, with a permit processing fee of \$100.00 or 50% of the permit fee, whichever is less. Cancellations of less than 14 days receive no refund of fees. Refunds are not given for inclement weather.

**Damage:** Permittee is responsible for damage or injury to County facilities and equipment. Damage or injury not covered by the amount of the deposit will be invoiced. Labor to repair the facility is charged at current maintenance staff hourly rate. Bills unpaid after 30 days are sent to collections.

**Set-up and Clean-up:** Permittee is responsible for set-up and clean up of the premises. Please leave facilities and grounds free of debris and other refuse from use. Trash and recyclables must be placed in appropriate containers. The facility must be restored to pre-use conditions.

**Decorating:** Poster tape and florist wire are the only fasteners permitted. No staples, tacks, nails, or stakes longer than 6 inches please! Release of balloons, birds or butterflies is prohibited by Parks policy. Biodegradable confetti only; no rice throwing.

**Activities for Minors:** Groups comprised predominately of participants under 21 years of age must be chaperoned at a ratio of one adult (over 21 years) to 12 minors.

**No Overnight Storage:** If you choose to bring rental equipment, you must arrange for it to be delivered and removed the same day as your reservation.

**Flammable Materials:** Flammable materials, including candles, are not permitted. Fuels and hazardous materials are not permitted in the park buildings and facilities. Fires must be confined to fireplaces and barbecue areas.

**Smoking:** Smoking and tobacco products are prohibited in Santa Cruz County Parks.

**Checks and Charge Backs:** Credit card charge backs and checks returned for insufficient funds will be charged at the current processing fee. Please note that credit cards are charged by Santa Cruz County.

**Changes to the Permit:** Any changes to the permit must be made in writing by the permittee only. Changes may result in a change in the permit fee. Date changes are subject to a \$50.00 change of date fee. No changes will be made with less than one week notice.

**Sub-Lease:** Permittee shall not assign or sub-lease any portion of the premises, or any rights under approved permit, without prior written approval of the Department.

**Special Conditions:** For large, special or unique events, the department may require Permittee to provide additional services, including security, traffic control, first aid services, fire control, special trash collection, and sanitary facilities beyond those available by the Department.

**Concessions:** The County reserves sole right to control all concessions in and about department buildings and park facilities through separate agreements. Please inquire about concessions agreements if you are planning on selling items or food in the Parks.

**Insurance Requirements:** Groups charging admission and/or selling alcoholic beverages must furnish the department with a Certificate of General Liability and Property Damage Insurance (one million dollars per occurrence) holding the County as additionally insured. The department may also require insurance for activities that it deems to be high risk.

**Deposits:** Deposits may be required. If facilities are left in pre-use conditions, the full deposit will be returned. If facility/equipment is damaged, costs to return facility to pre-use condition will be subtracted from the deposit. Refunds will be mailed approximately four weeks following the event.

**Public Use:** You are reserving a space at a County Park and the park will remain open for use by others. At some parks there may be other events happening at the same time as yours.

**Lost Items:** The Parks Department is not responsible for items left.

**Thank You For Choosing Santa Cruz County Parks**



## **ASSUMPTION OF LIABILITY, WAIVER and INDEMNITY**

### **1. ASSUMPTION OF LIABILITY**

Permittee, whether individual, group, or entity, is solely responsible for any and all liabilities to persons or property resulting from use of the Park Facility, including damage to any County property or structures. Permittee will indemnify, defend and hold harmless the County of Santa Cruz, its elected and appointed Boards, Commissions, Officers, Agents, and Employees from any claims, suits, losses or damages for injury to persons or property arising from or connected to this use of the Park Facility.

### **2. AGREEMENT TO ABIDE BY TERMS AND CONDITIONS**

Permittee, whether individual, group, or entity, represents that he/she/it has read these Terms and Conditions, agrees to make them known to persons attending the function or activity, and agrees that no violation of such shall be allowed to occur on the premises or facilities. Permittee understands that permission to use of the Park Facility is contingent upon compliance with these Rules and Regulations (Terms and Conditions) and that permission may be revoked at any time upon failure of persons attending the function or activity to fully comply with these Rules and Regulations (Terms and Conditions).

### **3. PERMITTEE, OR REPRESENTATIVE, TO BE PRESENT**

Permittee, or the group or entity individual named in the Permit, will be present during the entire period of use of the facility.



# ARTS & CULTURE

Music, art, and performances combined with rich cultural history and beautiful natural surroundings are all ingredients – when combined – give Santa Cruz County its creative flair. Opt for a self-guided tour of businesses which display the work of local artists during the First Friday Art Tour. [Kid-friendly museums](#) offer something for everyone, and [arts and culture experiences in Santa Cruz County](#) are easy to find! Explore local museums and retail galleries like the Santa Cruz Museum of Art, Pajaro Valley Arts Council, Santa Cruz Art League, Santa Cruz Mountain Arts Center, and more.

Guests on the self-guided tour are welcomed by artists and artisans and can see creations evolve before their eyes. At [Abbott Square Market](#) in Downtown Santa Cruz, public art and performance combine to create a vibrant public space, with interactive displays for kids and a hip, young vibe. [Take a class](#), or explore rotating or permanent exhibits throughout the county, and discover the creative energy that makes Santa Cruz County so unique! Located in Watsonville; [Annieglass](#), an award winning glasswork production studio, offers Craft Bar experiences led by acclaimed artist and owner Ann Morhauser. Create a succulent garden, leather wallet, pint mug and more!

During the summertime, Santa Cruz County offers countywide performing arts for visitors to enjoy. [Santa Cruz Shakespeare](#) offers productions of ye' old classics under the stars in [DeLaveaga Park](#). Cabrillo College holds its own [Festival of Contemporary Music](#), which celebrates the community, ignites social conscience and sparks the imagination! See below for a full list of 'Arts and Culture' related activities in Santa Cruz County!



## **WORK IT: GALLERY DIRECTOR ANN HAZELS**

[READ MORE >>](#)



## **YOUR GUIDE TO FIRST FRIDAY**

[READ MORE >>](#)



## **GET CRAFTY WITH THESE D.I.Y. CLASSES**

[READ MORE >>](#)



## **ARTIST JARED LEAKE'S SANTA CRUZ**

[READ MORE >>](#)

### **SPOTLIGHT FEATURE**

## **CHARLIE HONG KONG**

Organic Asian inspired street food. Vegan noodles & rice bowls – chicken, seafood, tofu & savory meats options. “Healthiest Restaurant in Santa Cruz County” Voted Best Cheap Eats. Eat-in or take-out. Lunch, dinner, outdoor dining, children's menu, beer/wine. Open daily 11 AM – 11 PM, including holidays. Reservations not accepted.



# SEARCH ARTS & CULTURE

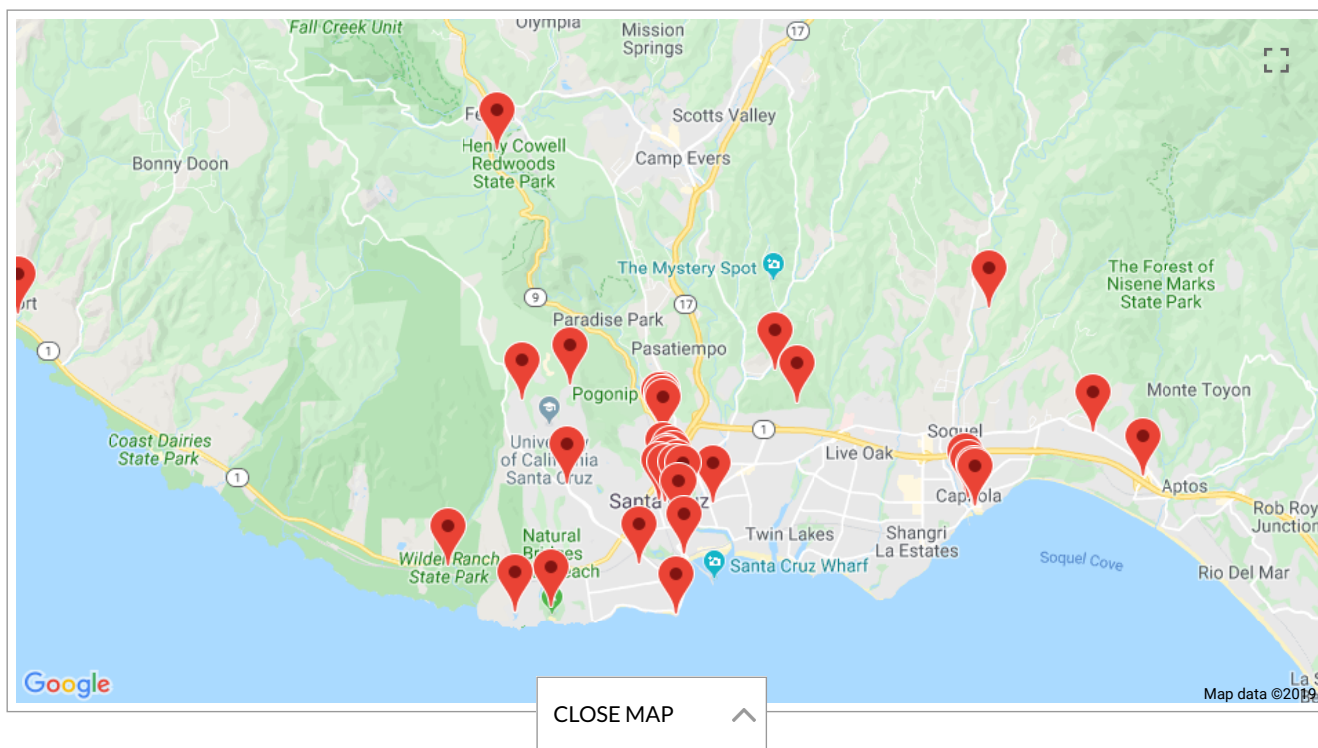
All Subcategories



Keyword

49 RESULTS

SORT BY: [FEATURED](#) | [A-Z](#) | [PET FRIENDLY](#)



**ANNIEGLASS**

WATSONVILLE

**AGRICULTURAL HISTORY PROJECT**

WATSONVILLE



**ANN BALDWIN MAY ART QUILTS**

SANTA CRUZ

**APTOS HISTORY MUSEUM**

APTOS

**ARTISANS & AGENCY**

SANTA CRUZ

**ARTS COUNCIL SANTA CRUZ COUNTY**

SANTA CRUZ

**BIG BASIN REDWOODS STATE PARK**

BOULDER CREEK

**BOOKSHOP SANTA CRUZ**

SANTA CRUZ



**CABRILLO COLLEGE ART GALLERY**

APTOS

**CAPITOLA ART & CULTURAL COMMISSION**

CAPITOLA



**CAPITOLA HISTORICAL MUSEUM**

CAPITOLA

**CAPITOLA VILLAGE BUSINESS IMPROVEMENT ASSOCIATION**

CAPITOLA

**CASTRO ADOBE STATE HISTORIC PARK**

WATSONVILLE

**CITY OF WATSONVILLE NATURE CENTER**

WATSONVILLE

**COLLIGAN THEATER**

SANTA CRUZ

**CRAFT GALLERY**

CAPITOLA

**DELAVEAGA PARK**

SANTA CRUZ

**ELOISE PICKARD SMITH GALLERY**

SANTA CRUZ



**FRIENDS OF SANTA CRUZ STATE PARKS**

SANTA CRUZ

**HAUSMAN STUDIO**

SOQUEL

**HENRY COWELL REDWOODS STATE PARK**

FELTON

**HENRY J. MELLO CENTER FOR PERFORMING ARTS**

WATSONVILLE



**KUUMBWA JAZZ**

SANTA CRUZ

**LUNDBERG STUDIOS**

DAVENPORT

**MARY PORTER SESNON ART GALLERY**

SANTA CRUZ

**MICHAELANGELO GALLERY/FASHIONART SANTA CRUZ**

SANTA CRUZ



**MISSION SANTA CRUZ**

SANTA CRUZ

**MONTEREY BAY NATIONAL MARINE SANCTUARY EXPLORATION CENTER**

SANTA CRUZ

**NATURAL BRIDGES STATE BEACH**

SANTA CRUZ

**PAJARO VALLEY ARTS**

WATSONVILLE

**PAJARO VALLEY HISTORICAL ASSOCIATION**

WATSONVILLE

**RADIUS GALLERY**

SANTA CRUZ

**RANCHO DEL OSO NATURE & HISTORY CENTER**

DAVENPORT

**SAN LORENZO VALLEY MUSEUM**

BOULDER CREEK





**SANTA CRUZ ART LEAGUE**

SANTA CRUZ

**SANTA CRUZ CIVIC AUDITORIUM**

SANTA CRUZ

**SANTA CRUZ MISSION STATE HISTORIC PARK**

SANTA CRUZ

**SANTA CRUZ MOUNTAINS ART CENTER**

BEN LOMOND

**SANTA CRUZ MUSEUM OF ART & HISTORY**

SANTA CRUZ

**SANTA CRUZ MUSIC FESTIVAL**

SANTA CRUZ

**SANTA CRUZ SEA GLASS & OCEAN ART FESTIVAL**

SANTA CRUZ

**SANTA CRUZ SHAKESPEARE**

SANTA CRUZ



**SANTA CRUZ SURFING MUSEUM**

SANTA CRUZ

**SEYMOUR MARINE DISCOVERY CENTER**

SANTA CRUZ

**STEPHAN'S FINE JEWELRY**

SANTA CRUZ

**TANNERY ARTS CENTER**

SANTA CRUZ

**THE PAINTED CORK**

SANTA CRUZ

**UCSC ARTS DIVISION**

SANTA CRUZ

**WILDER RANCH STATE PARK**

SANTA CRUZ



### VISITOR INFORMATION CENTER

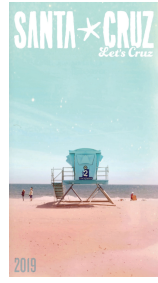
303 Water Street, Suite 100  
Santa Cruz, CA 95060  
[800.833.3494](tel:800.833.3494) or [831.425.1234](tel:831.425.1234)

Monday-Friday 9:00 a.m.-4:00 p.m.  
Closed 12:00 p.m.-1:00 p.m.

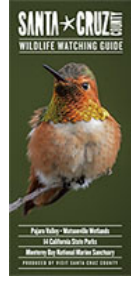
Saturdays and Sundays 11 a.m.-3 p.m.

[CONTACT US >>](#)

### VISITORS GUIDE



[GET YOUR FREE GUIDE >>](#)



[GET YOUR FREE WILDLIFE WATCH GUIDE >>](#)

### FOLLOW US



### E-NEWSLETTER SIGN-UP

Get your monthly guide to Santa Cruz County's events, attractions, and more.



[SUBMIT YOUR MEETINGS RFP >>](#)



Visit Santa Cruz County is a private, non-profit corporation, serving as the official visitor marketing entity for Santa Cruz County. Visit Santa Cruz County works to enhance tourism, the visitor experience, and the area economy by positioning and promoting Santa Cruz County as a year-around visitor, conference and film destination.



## Coastal Access



### NORTH COUNTY:

**Greyhound Rock**(pictured above) - On HWY1 north of Scott Creek, it has a paved pedestrian access to beach, picnic tables, a large parking lot, memorial benches and a disabled accessible view platform.

**Scott Creek Beach** - Snowy Plover nesting habitat area.

**Davenport Landing**(pictured above) - Disabled accessible ramp to beach and restrooms, improved shoulder parking.

**Bonny Doon** - On HWY1 where Bonny Doon Road ends it has 45 parking spaces, a bus stop and an improved trail head.

---

### MID COUNTY:

**Pleasure Point** - At the end of 41st Ave "The Hook" is a popular surfing spot, it has picnic tables, a parking lot and restrooms.

**Rockview Drive** - Near end of 30th Ave, has a picnic table.

**12th Avenue** - Has coastal stairway.

**13th Avenue** - Has coastal stairway.

**20th Avenue** - Has coastal stairway.

**21st - 23rd Avenue** - Access only

**26th Avenue** - Access only

**35th Avenue** - Has coastal stairway.

**38th Avenue** - Has coastal stairway.

---

### SOUTH COUNTY:

**Hidden Beach**- Also a park, has paved pedestrian access to beach.

**Via Concha Ave.** - Has coastal stairway.

**Via Gaviota Ave.** - Has coastal stairway.

**Via Palo Alto Ave.** - Has coastal stairway.

**Dolphin at Sumner** - One of the most beautiful access spots, this access trail leads under a train tressel to a stairway leading to the beach.

# SANTA CRUZ COUNTY DOG PARKS

*Polo Grounds County Park,  
2255 Huntington Dr., Aptos*

*Pinto Lake County Park,  
757 Green Valley Rd., Watsonville*



*Dog parks can be a great place for you and your dog to enjoy, but there are rules to follow and etiquette to respect.*

Use the poop bag dispensers and pick up after your pet.

Obey the **Leash Law** until you have brought your dog inside the enclosed dog park area.

Dogs must be at least 4 months old.

Dogs must be vaccinated, and you should carry your dog's rabies certificate with you.

Please exercise caution when bringing small children inside the dog park.

Don't pick up another dog without the owner's consent.

Don't bring an aggressive or unsocialized dog into the dog park area.

Please, no dogs in heat.

COUNTY OF SANTA CRUZ  
Parks, Open Space & Cultural Services  
979 17th Avenue  
Santa Cruz, CA 95062



COUNTY OF SANTA CRUZ DEPARTMENT OF \_\_\_\_\_  
**PARKS, OPEN SPACE AND CULTURAL SERVICES**

## A DOG OWNER'S GUIDE



**to enjoying  
the parks of  
Santa Cruz County**

**Santa Cruz County  
Department of Parks, Open Space  
and Cultural Services**

979 17th Avenue  
Santa Cruz, CA 95062  
831-454-7901  
[www.scparks.com](http://www.scparks.com)

## WHY SHOULD YOU BOTHER TO LEASH YOUR DOG?

### IT'S THE LAW!

The fines for an unleashed dog can be over \$240, depending on the charges that may be included for violation of one or more of the following:

- Dog is not on a leash;
- Dog harasses, kills or maims deer, birds, or other wildlife protected by law;
- Requirements for licensing, vaccination, and display of tags not followed;
- Dog is not spayed or neutered;
- Dog waste not properly disposed of.

### LEASHING YOUR DOG CAN HELP PREVENT A VARIETY OF ISSUES!

- An unleashed dog may dart into traffic causing an accident.



#### Fact:

Unleashed dogs cause over 1,500 car accidents and fatalities per year. Drivers trying to avoid hitting an unleashed dog end up paying the price simply because the dog was not responsibly handled.

- Dogs trespass from the park onto private property.

- Protects you from costly medical bills, should your dog harm a child or jump up on a frail or elderly person, causing injury.
- Fighting with other dogs; a loose dog can be difficult to restrain.
- Court bills: lawsuits can arise from a dog biting someone and it may be required that the dog be euthanized.
- Protects the environment from dogs harassing, killing or maiming wildlife.
- A dog may be lost or stolen.
- It's the right thing to do! While an owner likes their dog, others may not.



Leashed dogs are allowed in all county parks and beaches, **except for Quail Hollow Ranch and Scott Creek Beach**. These areas have sensitive habitats and dogs are prohibited.

To prevent children from coming into contact with feces and urine, **dogs are not allowed in playground areas or athletic fields.**

For information about the many animal services provided in Santa Cruz County please call the Santa Cruz County Animal Services Authority at (831) 454-7303.

## THE 3 SIMPLE RULES = IT'S THE LAW!

### 1 - License Your Dog

License your dog for your dog's protection. If an Animal Control Officer finds a licensed dog, they have a commitment to reunite the owner with the dog. A license tells an officer that a dog has a home and is not a stray.

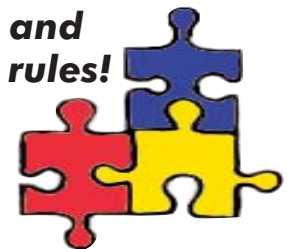
### 2 - Leash Your Dog

Leashing your dog protects everyone, and can help prevent many problems and costly bills. Dogs must be leashed in all County-owned parks and beaches, unless the dog is in a specified, fenced dog area.

### 3 - Leave No Unpleasant Waste

Always carry a dog bag; dog waste is your responsibility. When you fail to clean up after your dog, it affects the experience of other park visitors and their pets. The waste left may have parasites that can spread disease to other dogs and to people. We all know what an unpleasant experience it is to step in dog waste! Left on the ground, dog waste can be transported by rain and washed into storm drains. Remember, storm drains are not connected to any type of treatment plant and flow directly into our streams, lakes, and bays.

**Put the pieces  
together and  
follow the rules!**







COUNTY OF SANTA CRUZ

# PARKS, OPEN SPACE & CULTURAL SERVICES



Select Language ▼

[Santa Cruz County Home](#)

[Advisory Bodies & Community Partners](#)

[Arts & Cultural Programs](#)

[Book a Facility](#)

[Employment & Volunteering](#)

[Parks](#)

[Recreation Programs](#)

[Simpkins Family Swim Center](#)

You are here: [Home](#) » [Parks](#) » [Garden Plots](#)

## Garden Plots

Garden plots are located at Jose Avenue Park, Felt Street Park, the future park site of Chanticleer Park, which are located in Live Oak, and The Farm Park in Soquel. Garden plot contracts are annual and currently cost (effective July 1, 2018) \$65 resident / \$70 non-resident for the year (fees are subject to change). Availability varies per park. If there are no garden plots currently available to rent, your name can be added to a waitlist and will be selected in the order of sign-up in the Spring as plots become available. Email waitlist requests may be sent to [reservations@scparcs.com](mailto:reservations@scparcs.com) which should include your name, address and contact information. When new community garden parks open we will select from a lottery of the existing waitlist. Our brochure is attached below for more information.

[Garden Plot Brochure](#)

**Santa Cruz County Department of Parks, Open Space and Cultural Services**

979 17th Avenue, Santa Cruz, CA 95062


General Information (Monday-Friday, 9:00 a.m. - 4:00 p.m.)


Phone: (831) 454-7901 • [PRCweb@santacruzcounty.us](mailto:PRCweb@santacruzcounty.us)


SHARE    ...

[Terms Of Use](#) | [Privacy Statement](#)


© 2019 Santa Cruz County Parks

 [Contact Webmaster](#)

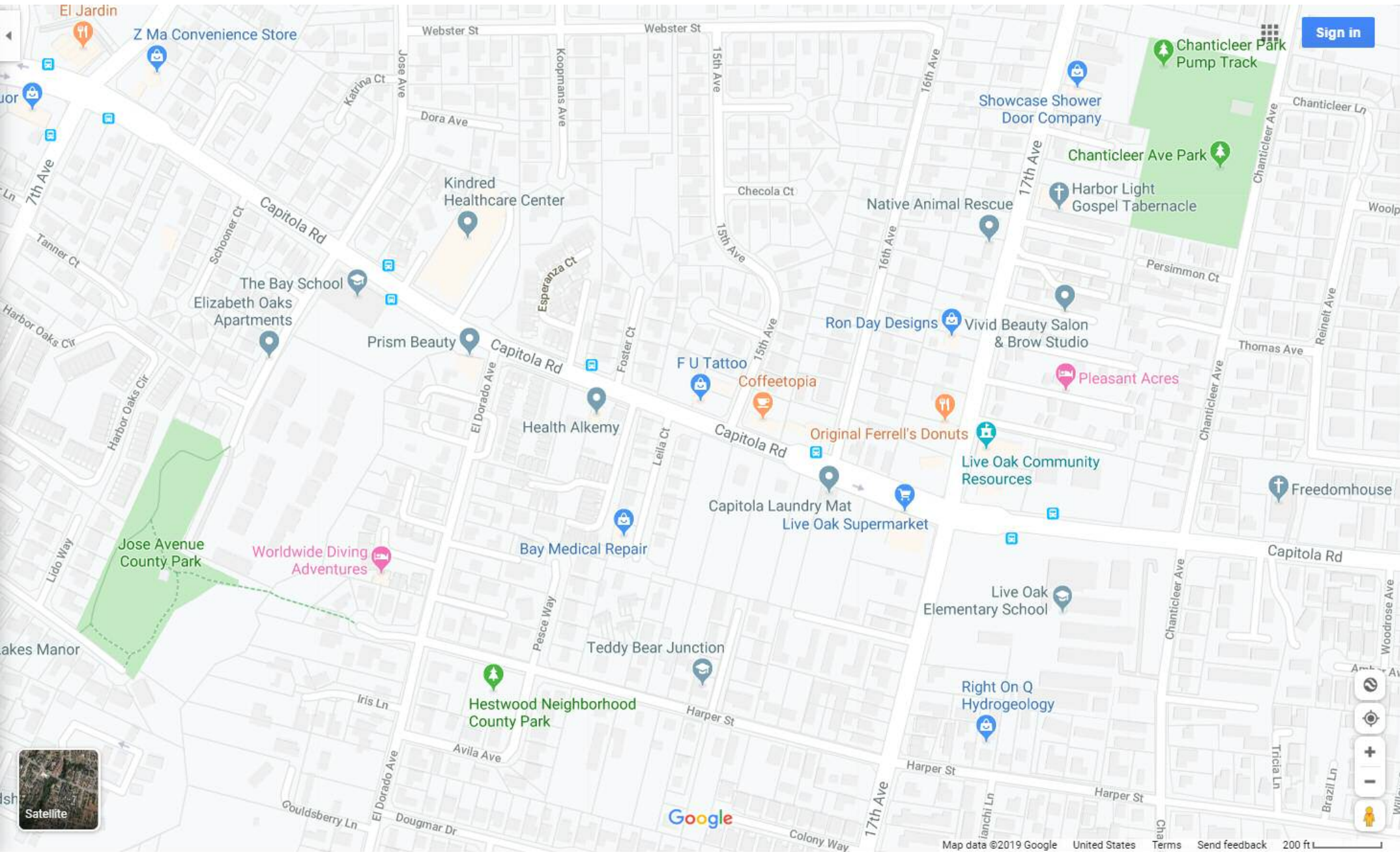
 [Facebook](#)

 [Instagram](#)

 [Twitter](#)

 [Plus](#)



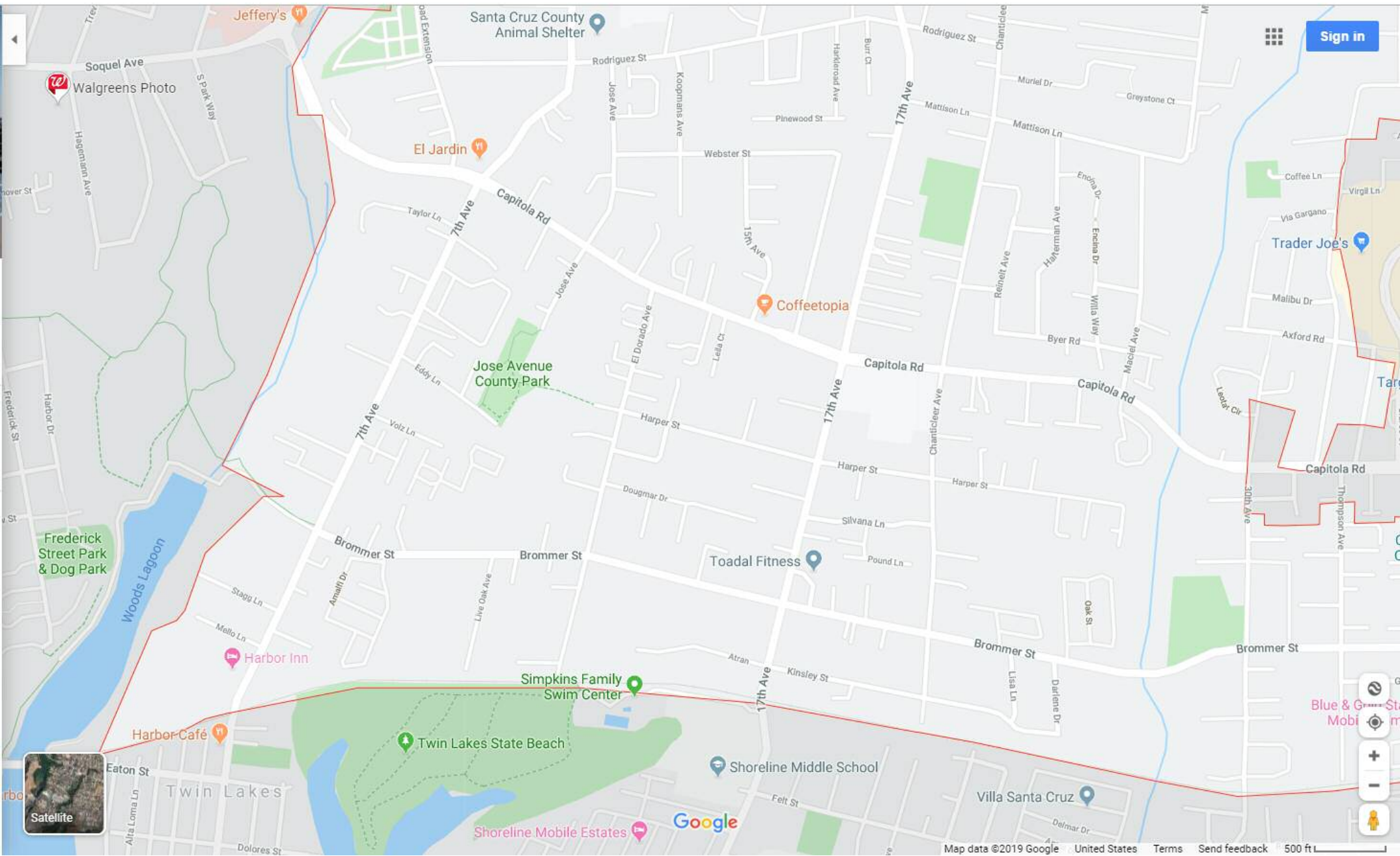


Sign in



Satellite

Google



Sign in

Walgreens Photo

Jeffery's

Santa Cruz County Animal Shelter

El Jardin

Coffeetopia

Jose Avenue County Park

Trader Joe's

Frederick Street Park & Dog Park

Harbor Inn

Toadal Fitness

Simpkins Family Swim Center

Harbor Café

Twin Lakes State Beach

Shoreline Middle School



Satellite

Shoreline Mobile Estates

Google

# Santa Cruz County Parks

	Ballfields	Basketball	Beach Access	Comm. Room	Dog Park	Hiking	Horseshoe Pit	Parking	Picnicking	Play Element	Restrooms	Skate Park	Soccer	Swimming	Tennis	Volleyball	Public Art
Aldridge Lane		*					*	*	*	*	*				*		
A.J. Cummings	*					*		*	*	*	*		*				*
Aptos				*				*	*		*						*
Ben Lomond		*							*	*	*						
Brommer Street	*	*						*	*	*	*				*		*
Coffee Lane		*						*	*	*							
Felton Covered Bridge								*	*	*	*					*	*
Floral									*	*							*
Freedom Lake																	
Hestwood									*	*	*						*
Hidden Beach			*					*	*	*	*						
Highlands	*			*		*		*	*	*	*	*	*		*	*	
Jose Ave.		*					*	*	*	*	*	*				*	*
Mesa Village		*							*	*	*						
Michael Grey	*							*	*		*						
Moran Lake			*			*		*	*		*						
Pinto Lake	*				*	*		*	*	*	*		*				
Polo Grounds	*				*			*	*		*		*				*
Quail Hollow Ranch				*		*		*	*		*						
Richard Vessey									*	*	*						
Santa Cruz Gardens										*							
Scott								*	*	*	*					*	
Seascape			*					*	*	*	*						*
Simpkins Swim Center				*				*			*			*			*
Soquel Lions									*	*	*						
Twin Lakes		*							*	*	*				*		*
Valencia Hall				*													
Willowbrook		*							*	*	*				*		*
Winkle Farm									*	*							





You are here: [Home](#) » [Parks](#) » [Surf Schools](#)

## Surf Schools

### Learn to surf in iconic Pleasure Point!

Santa Cruz County Parks is pleased to offer surf lessons through the Surf School Concessionaire Program, where you can learn to surf with permitted, professional, local surf schools.

**Club Ed**  
[www.club-ed.com](http://www.club-ed.com)  
(831) 464-0177  
[surf@club-ed.com](mailto:surf@club-ed.com)

**Richard Schmidt Surf School Inc.**  
[www.richardschmidt.com](http://www.richardschmidt.com)  
(831) 423-0928  
[surf@richardschmidt.com](mailto:surf@richardschmidt.com)

**Surf School Santa Cruz**  
[www.surfschoolsantacruz.com](http://www.surfschoolsantacruz.com)  
(831) 428-3647  
[bud@surfschoolsantacruz.com](mailto:bud@surfschoolsantacruz.com)



### Surf School Concessionaire Program East Cliff Parkway in Live Oak



A permit is required to conduct surf instruction at designated beaches and coastal access points along East Cliff Parkway at Pleasure Point, 36th Avenue, 38th Avenue, and The Hook, per Santa Cruz County Code Section 10.80.010.

The three permitted surf schools provide services that preserve public safety, maximize recreational use by all beach visitors, and maintain quality surfing instruction opportunities for the public.

All surf schools are required to have their students and instructors wear colored uniform shirts or vests while conducting surf school instruction. Permitted surf school with their vest colors are as